



# SWIWAR VENTURER

## 5,150 BHP Anchor Handling Tug/ Supply Vessel

### GENERAL SPECIFICATION

#### General Particulars

Year Built	2007
Flag	Singapore
Class	ABS
Notation	✕ A1, Towing Vessel, Fire Fighting Vessel Class 1, Offshore Support Vessel AH, (E), ✕ AMS

#### Principal Dimensions

Length Overall	59.25m
Breadth Moulded	14.95m
Depth Moulded	6.10m
Design Draft	4.95m
GRT / NRT	1,678T / 503T

#### Machinery

Main Engine	2 x 2,575 BHP Caterpillar 3516B @ 1,600rpm
Main Generator	3 x 340kW, 415V/3ph/50Hz, Caterpillar 3408C
Emergency Generator	1 x 52kW Perkins
Propeller	4 blades, Berg Propulsion CPP
Bow Thruster	1 x 400kW Kawasaki KT-55B1, CPP

#### Performance & Consumption

Bollard Pull	63 Tons
Maximum Speed	14 Knots
Fuel Consumption	
At 100% MCR	17.32 Tons/day
At 85% MCR	14.72 Tons/day
with tow condition	12.03 Tons/day (Approx.)
without tow condition	9.57 Tons/day (Approx.)
Deck Loading	7.5 Ton/m <sup>2</sup>
Clear Deck Area	340 m <sup>2</sup>

#### GMDSS System

GMDSS System	A1+A2+A3, Furuno
Satellite EPIRB	1 x McMurdo MCM-406A
2-way portable VHF Radio	3 x Furuno/JRC
SART	2 x McMurdo RT9
Navtex Receiver (GMDSS)	1 x Furuno NX-500
Immarsat C	1 x Furuno Felcom-12

#### Navigation Equipment

X-Band Radar	1 x Furuno FR 2115
S-Band Radar	1 x Furuno 1942 Mark 2
Echo Sounder	1 x Furuno FE700
GPS	1 x Furuno GP1500-1T
Magnetic Compass	1 x Lilley & Gilley
Gyro compass	1 x Anschuetz
Autopilot	1 x Raytheon Nautopilot NP60
Weather Fax Receiver	1 x Furuno Fax 207
Doppler Speed Log	1 x Furuno DS 80
PA system	1 set

#### Newcruz Offshore Marine Ltd

12 International Business Park , Cyberhub@IBP #03-02, Singapore 609920

Tel: +65 65050 600 | Fax: +65 65050 801 | Email: marketing@swiber.com | Website: www.swiber.com

# SWIWAR VENTURER

## 5,150 BHP Anchor Handling Tug/ Supply Vessel

### GENERAL SPECIFICATION

#### Deck Machinery

Towing Winch	1 x 150T Line Pull, Mentrade Brake Holding - 200T
Windlass	1 x 10T @ 9m/min, Mentrade
Stern Roller	1 x 200T
Shark Jaw/ Tow Pin	1 set 200T, Karmoy
Capstan	2 x 5 Tons @ 15m/min, Mentrade
Tugger Winch	2 x 10 Tons @ 15m/min, Mentrade
Crane	3T SWL @ 9m

Tank	Capacity	Discharge Rates
Fuel Oil	537m <sup>3</sup>	1 x 150m <sup>3</sup> /hr @ 70m head
Fresh Water	361m <sup>3</sup>	1 x 100m <sup>3</sup> /hr @ 70m head
W.B./D.W.	399m <sup>3</sup>	1 x 100m <sup>3</sup> /hr @ 70m head
Mud	369m <sup>3</sup>	2 x 75m <sup>3</sup> /hr @ 75m head
Dry Bulk Cement	187m <sup>3</sup>	
Foam	13.17m <sup>3</sup>	
Detergent	13.17m <sup>3</sup>	

#### Accommodation

4 x 1 man cabin =	4 men
3 x 2 men cabin =	6 men
8 x 4 men cabin =	<u>32 men</u>
Total	<u>42 men</u>

#### Fire Fighting/ Extinguishing System

Meet FiFi Class 1

#### External (FFS):-

Fire Pumps	2 x 1,500m <sup>3</sup> /hr @ 13 bar, FFS Norway
Fire Monitors	2 x 1,200m <sup>3</sup> /hr @ 12 bar, FFS Norway
Emergency Fire Pump	1 x 75m <sup>3</sup> /hr @ 40m head

#### Internal:-

CO<sub>2</sub> system in engine rm. 1 x fixed fire fighting system  
c/w alarms

#### Life Saving/ Rescue Equipment

SOLAS Compliant

#### Miscellaneous/ Others

Fresh Water Maker	5 Tons/day
Sewage Treatment Plant	1 x 42Pax
Oily Water Separator	1 x Separator, 1m <sup>3</sup> /hr @ 15ppm

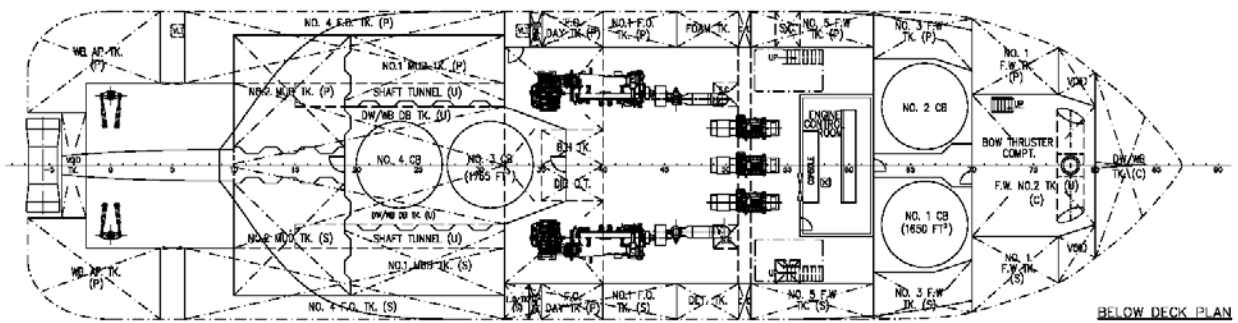
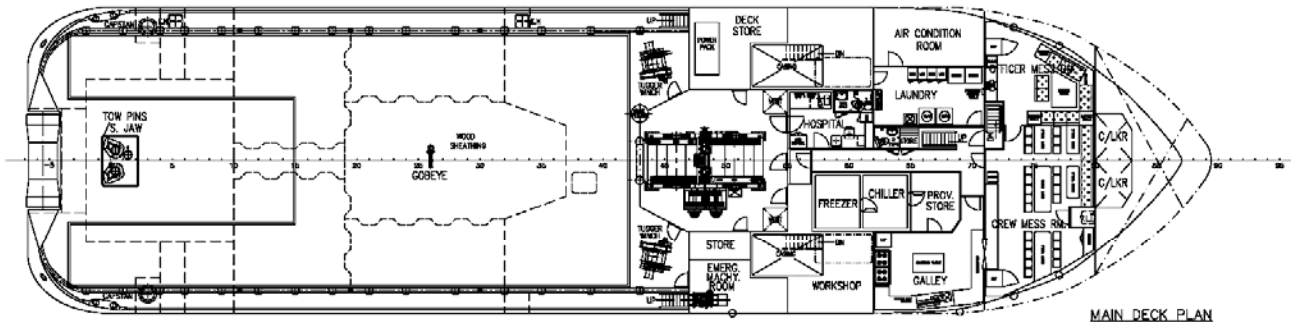
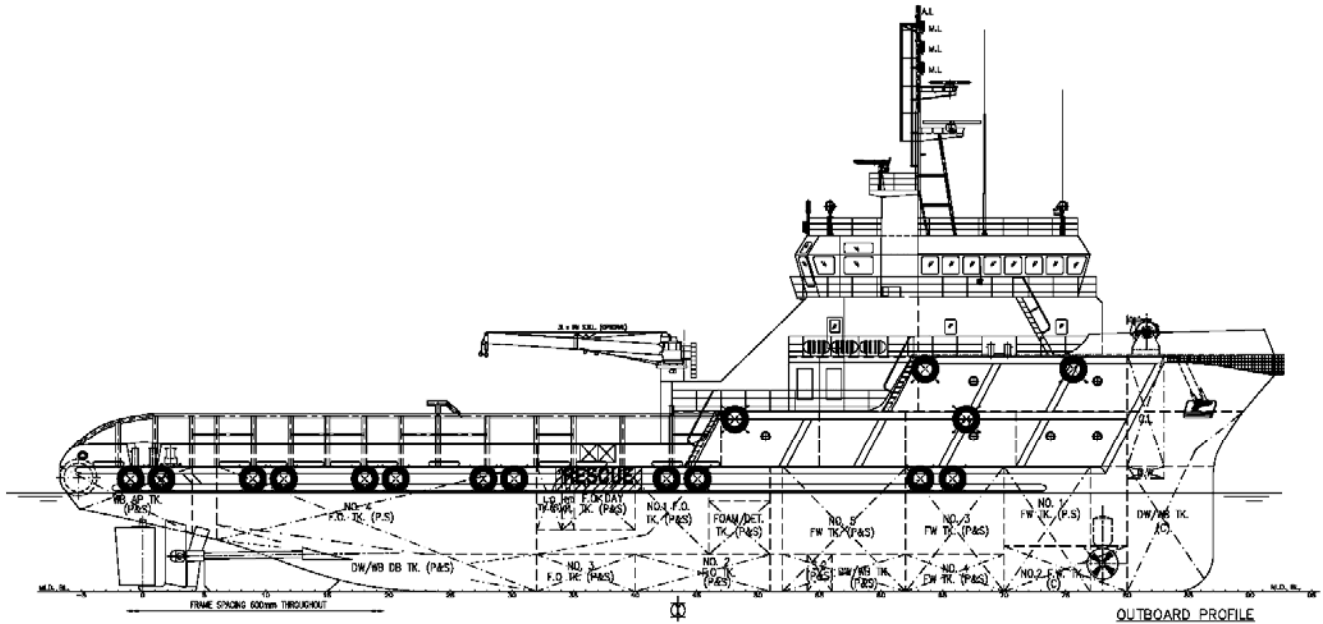
#### Newcruz Offshore Marine Ltd

12 International Business Park , Cyberhub@IBP #03-02, Singapore 609920

Tel: +65 65050 600 | Fax: +65 65050 801 | Email: marketing@swiber.com | Website: www.swiber.com

# SWIWAR VENTURER

## 5,150 BHP Anchor Handling Tug/ Supply Vessel



**Newcruz Offshore Marine Ltd**

12 International Business Park , Cyberhub@IBP #03-02, Singapore 609920

Tel: +65 65050 600 | Fax: +65 65050 801 | Email: [marketing@swiber.com](mailto:marketing@swiber.com) | Website: [www.swiber.com](http://www.swiber.com)