

SWIWAR CHALLENGER

5,150 BHP Anchor Handling Tug/ Supply Vessel



GENERAL SPECIFICATION

General Particulars

Year Built	2007
Flag	Singapore
Class	BV
Notation	I ✕ HULL ✕ MACH Supply Vessel/ Fire Fighting Ship 1- Water Spraying, Unrestricted Navigation

Principal Dimensions

Length Overall	58.70m
Breadth Moulded	14.60m
Depth Moulded	5.50m
Design Draft	4.75m
GRT / NRT	1,470T / 441T

Machinery

Main Engine	2 x 2,575 BHP @1,600 rpm, Caterpillar 3516B-HD
Main Generator	3 x 340kW, 415V/3ph/50Hz, Caterpillar 3408
Emergency Generator	1 x 65kW Perkins
Propeller	4 blades, Berg Propulsion CPP
Bow Thruster	1 x 315kW Kawasaki KT-43B1, CPP

Performance & Consumption

Bollard Pull	68 Tons
Maximum Speed	14 Knots
Fuel Consumption	
At 100% MCR	17.32 Tons/day
At 85% MCR	14.72 Tons/day
with tow condition	12.03 Tons/day (Approx.)
without tow condition	9.57 Tons/day (Approx.)
Deck Loading	7 Ton/m ²
Clear Deck Area	375 m ²

Deck Machinery

Towing Winch	1 x 150T Line Pull, Mentrade Brake Hold 200T
Windlass	1 x 10T, 9m/min, Mentrade
Stern Roller	1 x 200T
Shark Jaw/ Tow pins	1 set 200T Karmoy
Capstan	2 x 5 Tons @ 15m/min, Mentrade
Tugger Winch	2 x 10 Tons @ 15m/min, Mentrade

Tank	Capacity	Discharge Rates
Fuel Oil	482m ³	1 x 150m ³ /hr @ 75m head
Fresh Water	228m ³	1 x 100 m ³ /hr @ 75m head
W.B./D.W.	465m ³	1 x 100 m ³ /hr @ 75m head
Mud	259m ³	
Dry Bulk Cement	187m ³	
Foam	13.46m ³	
Detergent	13.46m ³	

Newcruz Offshore Marine Ltd

12 International Business Park , Cyberhub@IBP #03-02, Singapore 609920

Tel: +65 65050 600 | Fax: +65 65050 601 | Email: marketing@swiber.com | Website: www.swiber.com

SWIWAR CHALLENGER

5,150 BHP Anchor Handling Tug/ Supply Vessel

GENERAL SPECIFICATION

Accommodation

2 x 1 man cabin =	2 men
4 x 2 men cabin =	8 men
8 x 4 men cabin =	<u>32 men</u>
Total	<u>42 men</u>

GMDSS System

GMDSS System	A1+A2+A3, Furuno
Satellite EPIRB	1 x McMurdo E3
2-way Portable VHF Radio	3 x Icom Model GM-1500
SART	2 x McMurdo RT9
Navtex Receiver (GMDSS)	1 x Furuno NX-500
Inmarsat C	1 x Furuno Felcom-12

Navigation Equipment

X-band Radar	1 x Furuno FR 2115
S-Band Radar	1 x Furuno 1942 Mark 2
Echo Sounder	1 x Furuno FE700
GPS	1 x Furuno GP150
Magnetic Compass	1 x Lilley & Gilley
Gyro Compass	1 x Simrad GC80
Autopilot	1 x Raytheon Nautopilot NP60
Weather Facsimile Receiver	1 x Furuno Fax 207
Dopper Speed Log	1 x Furuno DS 80
PA System	1 Set

Fire Fighting/ Extinguishing System

Meet FiFi Class 1 with water curtain all round

External (FFS):-

Fire Pumps	2 x 1,500m ³ /hr @ 13 bar, FFS Norway
Fire Monitors	2 x 1,200m ³ /hr @ 12 bar, FFS Norway
Emergency Fire Pump	1 x 75m ³ /hr @ 40m head

Internal:-

CO ₂ system in engine room	1 x fixed fire fighting system c/w alarms
---------------------------------------	---

Life Saving/ Rescue Equipment

SOLAS Compliant

Miscellaneous/ Others

Fresh Water Maker	5 Tons/day
Sewage Treatment Plant	1 x 42Pax
Oily Water Separator	1 x Separator, 1m ³ /hr @ 15ppm

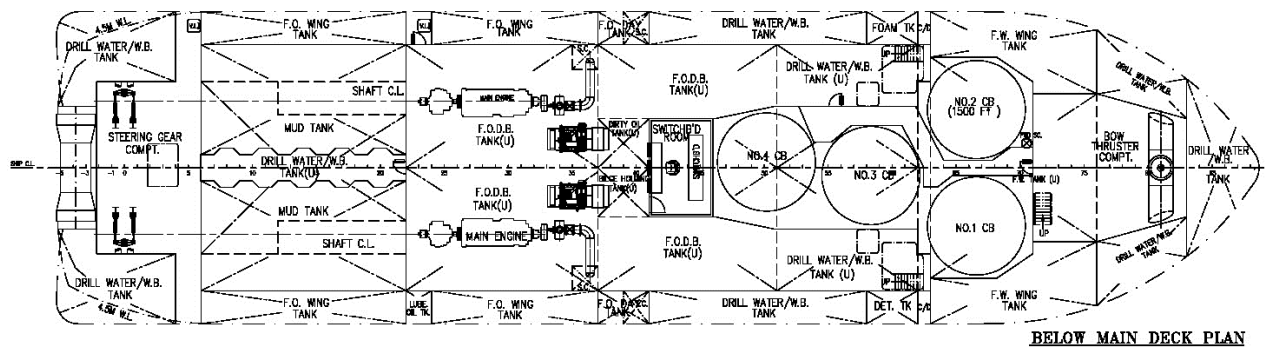
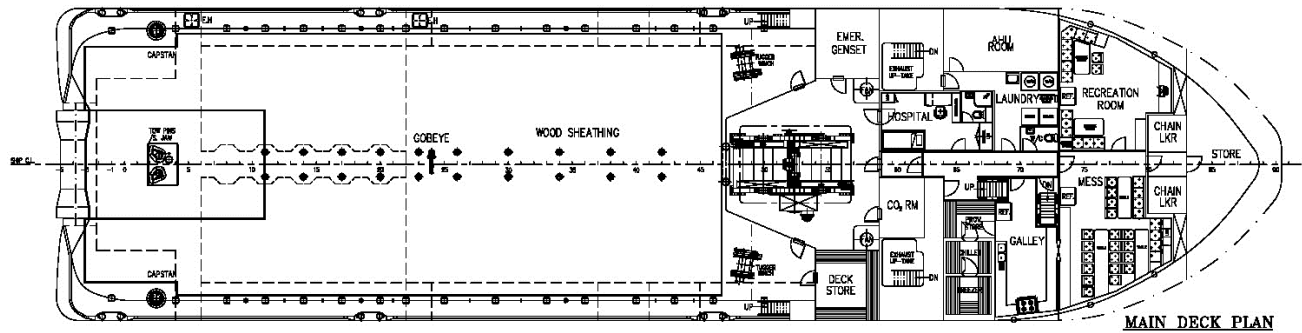
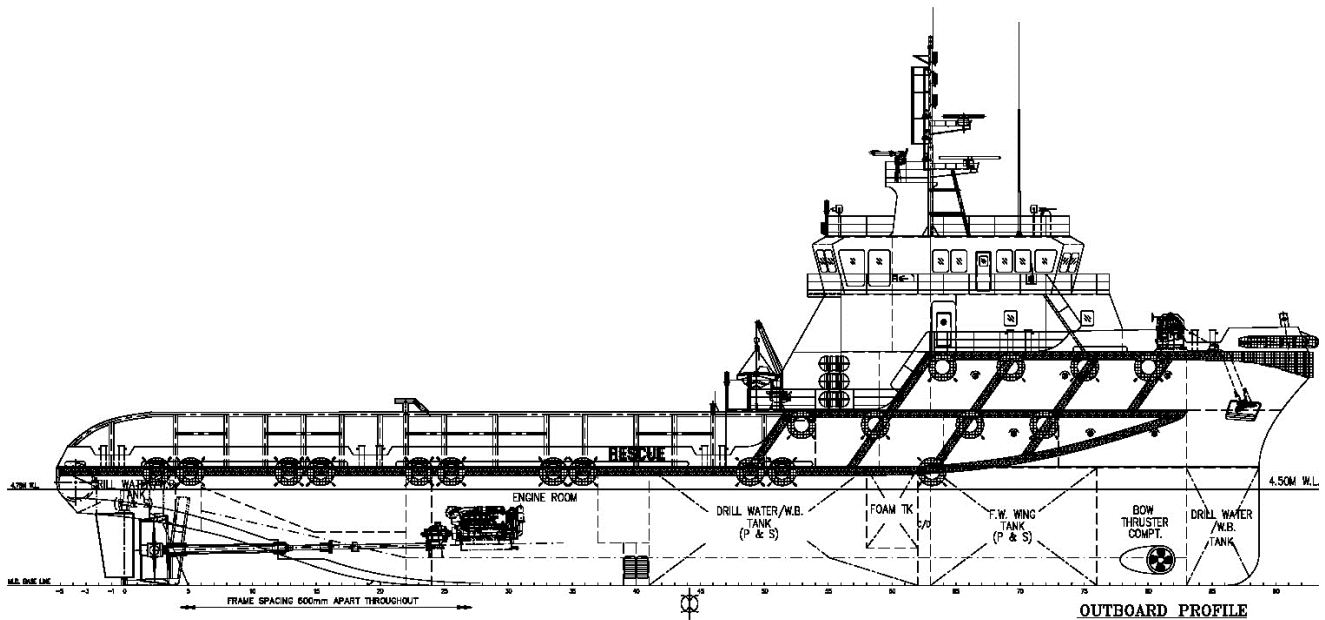
Newcruz Offshore Marine Ltd

12 International Business Park , Cyberhub@IBP #03-02, Singapore 609920

Tel: +65 65050 600 | Fax: +65 65050 601 | Email: marketing@swiber.com | Website: www.swiber.com

SWIWAR CHALLENGER

5,150 BHP Anchor Handling Tug/ Supply Vessel



Newcruz Offshore Marine Ltd

12 International Business Park , Cyberhub@IBP #03-02, Singapore 609920

Tel: +65 65050 600 | Fax: +65 65050 601 | Email: marketing@swiber.com | Website: www.swiber.com