

SWIBER TRADER

6,000 BHP Anchor Handling Tug/ Supply



GENERAL SPECIFICATION

General Particulars

Year Built	1979
Flag	Kingstown
Class	DNV
Notation	✕1A1 Tug Supply Vessel

Principal Dimensions

Length Overall	59.12m
Breadth Moulded	13.80m
Depth Moulded	6.90m
Draft (max.)	6.40m
GRT / NRT	1,314T / 395T

Machinery & Propulsion

Main Engines	2 x Wichmann: 6,000 BHP
Propellers	2 x VP in kort nozzles
Main Generators	2 x 170kW, 415V/3ph/50Hz, CAT D343
Auxiliary Generator	1 x 56kW CAT 3304
Bow Thruster	1 x Caterpillar D 343, 6.5 Tons

Performance & Consumption

Bollard Pull	67 Tons
Speed	12 Knots at 15m ³ /day
Cruising Range	6,624 N/miles
Deck Cargo	782 Tons
Deck Loading Capacity	5 Ton/m ²
Clear Deck Space	418 m ²

Deck Machinery

Towing Winch	150 Tons Norwinch waterfall type, Brake capacity 250 Tons
Anchor Windlass	Norwinch IA 39/44
Crane	1 x hydalift, 5 Tons @ 7m radius
Tow Pins	1 set Ulstein remote hydraulic
Tow Drum Capacity	1 x 1,000m x 56mm ø

Newcruz Offshore Marine Ltd

12 International Business Park , Cyberhub@IBP #03-02, Singapore 609920

Tel: +65 65050 600 | Fax: +65 65050 601 | Email: marketing@swiber.com | Website: www.swiber.com

SWIBER TRADER

6,000 BHP Anchor Handling Tug/ Supply

GENERAL SPECIFICATION

Tank	Capacity	Discharge Rates	Fire Fighting/ Extinguishing Equipment
Fuel Oil	750m ³	95m ³ /hr @ 60m head	- Fire pump coupled to independent diesel engine of 1,200m ³ /hr @ 10 bar.
Lube Oil	33m ³	-	
Fresh Water	166m ³	95m ³ /hr @ 60m head	- Two fixed foam/ water manual Fire Monitors 10,000L/min @ 100m.
Freezer	5.2m ³	-	
Chiller	6.9m ³	-	
Drill Water	-	95m ³ /hr @ 60m head	
Liquid mud	-	80m ³ per hr	Life Saving/ Rescue Equipment SOLAS Compliant
Bulk	-	50m ³ per hr @ 125 psi	

Accommodation

Crews	12
Passengers	12 (1 x 4 berth & 1 x 8 berth)

GMDSS System

GMDSS (Area A3 Compliant)/Sat C/Sat Mini-M / Tel & fax / HF / VHF / EPIRB

Navigation Equipment

Auto Pilot	Robertson AP45
Radar 1	Furuno RDT 8100D
Radar 2	Furuno FR 8250D
Gyro Compass	Speery SR 120
Navtext	Furuno NX500
Echo Sounder	Furuno F851 S
GPS	Furuno GP 90

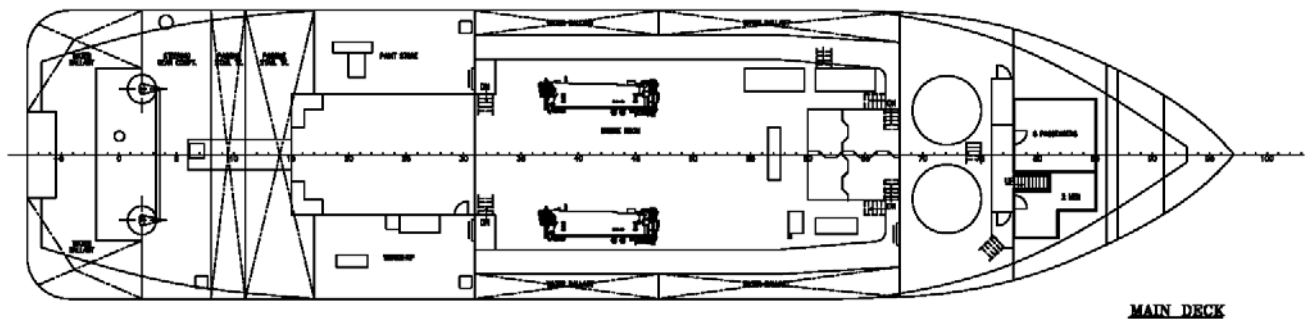
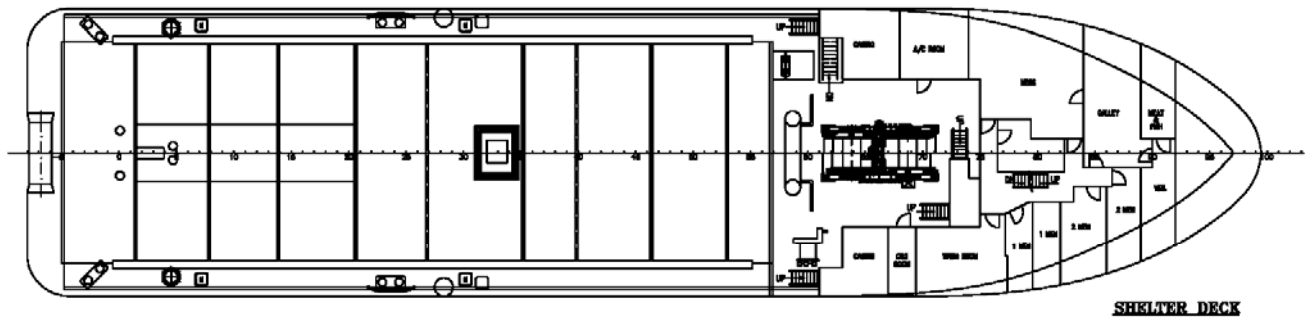
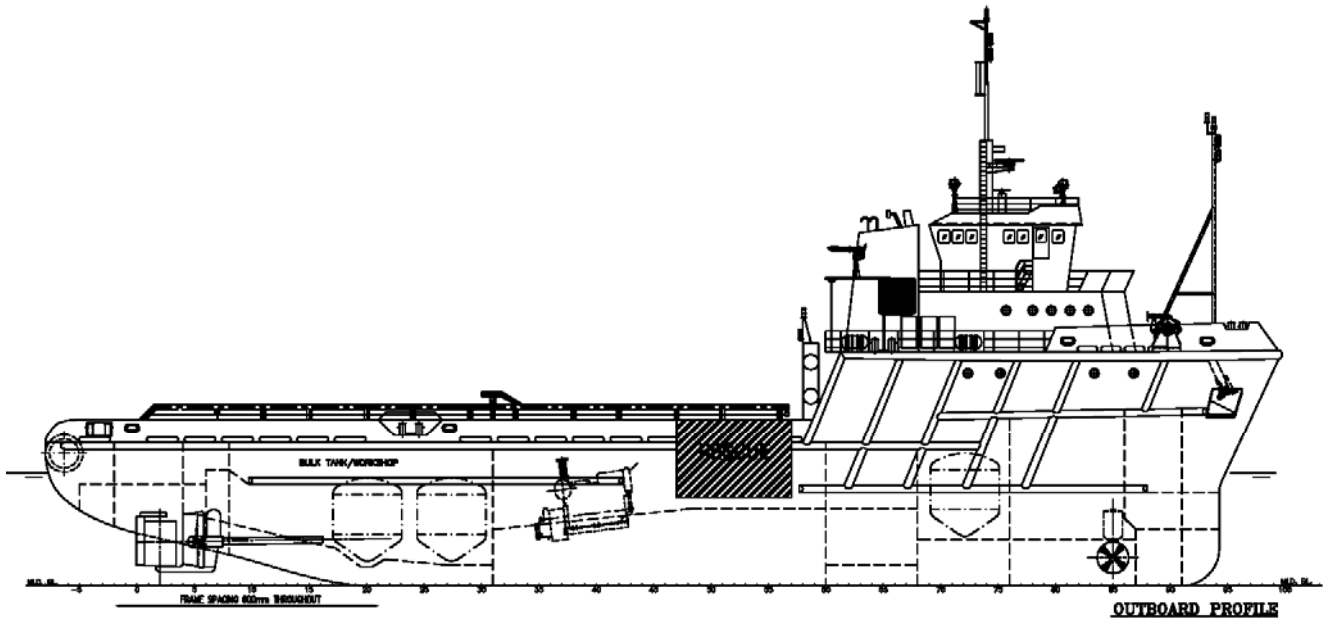
Newcruz Offshore Marine Ltd

12 International Business Park , Cyberhub@IBP #03-02, Singapore 609920

Tel: +65 65050 600 | Fax: +65 65050 601 | Email: marketing@swiber.com | Website: www.swiber.com

SWIBER TRADER

6,000 BHP Anchor Handling Tug/ Supply



Newcruz Offshore Marine Ltd

12 International Business Park , Cyberhub@IBP #03-02, Singapore 609920

Tel: +65 65050 600 | Fax: +65 65050 601 | Email: marketing@swiber.com | Website: www.swiber.com