

SWIBER LINA

5,150 BHP Anchor Handling Tug



GENERAL SPECIFICATION

General Particulars

Year Built	2011
Flag	Singapore
Class	ABS
Notation	ABS ✕ A1 (E) AH Offshore Towing Service ✕ AMS

Principal Dimensions

Length Overall	45.00m
Breadth Moulded	12.60m
Depth Moulded	5.30m
Design Draft	4.00m
Maximum Draft	4.50m
GRT / NRT	883T / 265T

Machinery

Main Engine	2 x 2,575 BHP Cat. D3516B @ 1,600rpm, Caterpillar
Main Generator	3 x 245kW, 415V/3ph/50Hz, Cummins @ 1,500rpm
Emergency Generator	1 x 80kW @ 415V/3ph/50Hz, Cummins
Gearbox	2 x Twin Disc Nikko, MGN 1727V, Ratio 7.5: 1
Bow Thrusters	1 x 5 Tons, Suzhou Kaosike thrust electric motor
Steering Gear	1 x 4.4 t-m Torque, Nufoss
Fixed Pitch Propeller	2 x propeller, dia. 2,700mm

Performance & Consumption

Bollard Pull	65 Tons
Maximum Speed	12 Knots
Fuel Consumption	
At 100% MCR	17.32 Tons/day
At 85% MCR	14.72 Tons/day
with tow condition	12.03 Tons/day (Approx.)
without tow condition	9.57 Tons/day (Approx.)
Deck Strength	5 Ton/m ²
Clear Deck Area	200m ²

Accommodation

Berths	2 x 1 man cabin =	2 men
	3 x 2 men cabin =	6 men
	4 x 4 men cabin =	<u>16 men</u>
	Total	<u>24 men</u>

Swiber Offshore Marine Ltd

12 International Business Park , Cyberhub@IBP #04-01, Singapore 609920

Tel: +65 65050 800 | Fax: +65 65050 801 | Email: marketing@swiber.com | Website: www.swiber.com

5,150 BHP Anchor Handling Tug

GENERAL SPECIFICATION

GMDSS & Navigation Equipment

GMDSS	1 x A1-2-3 Area, Furuno
Radar	1 x Furuno model FAR-2117
Radar	1 x Furuno model 1942 MKII
Echo Sounder	1 x Furuno model JEE-582
Speed Log	1 x Furuno model DS-80
Gyro Compass	1 x Anschuetz model Standard 22
DGPS	1 x Furuno model JNAV-500
Magnetic Compass	1 x Lilley & Gillie model MK 2000
AIS	1 x Furuno model FA-150
Auto Pilot	1 x Anschuetz model NP 60
Weather Receiver	1 x Furuno model FAX-408
Immarsat C	1 x Furuno model FELCOM-15/SSAS
GMDSS VHF Receiver	1 x Furuno model FM-8800S
SART	1 x Mcurdo model S4
EPIRB	1 x Mcurdo model E5
Navtex	1 x Furuno NX-700B

Deck Machinery

Towing Winch	1 x hydraulic high pressure waterfall double drum type, Zicom Wire Capacity: 1,000m x 50mm dia. wire each Brake Holding: 180 Tons on 1 st layer for each drum
Windlass	1 x electro hydraulic with twin gypsy, Zicom type of 6T @ 12m per min with 32mm dia. U2 chain
Stern Roller	SWL 200T, 4.185m x 1.8m dia. c/w bearing
Towing Pin	1 set vertical hydraulic SWL 200 Tons, Zicom
Shark Jaw	1 set hydraulically operated SWL 300 Tons, Zicom
Tugger Winch	2 x 10 Tons Line Pull @ 10m/min, Zicom
Capstan	2 x 5 Tons Line Pull @ 15m/min, Zicom
Davit	Slewing davit for rescue boat, West Marine SWL 13.5kN

Tank

Tank	Capacity	Discharge Rates
Fuel Oil	460m ³	1 x 50m ³ /hr @ 60m head
Fresh Water	260m ³	1 x 50m ³ /hr @ 60m head
Foam	11.4m ³	
Dispersant	8.9m ³	

Fire Fighting/ Extinguishing System

External (FFS) FIFI 1/2:-

FiFi pump with one engine PTO driven	1 x 1,500m ³ /hr @ 140m head
Fire Monitors	2 x 1,200m ³ /hr @ 12 bar, FFS
GS/ Fire External Pump	1 x 50m ³ /hr @ 60m head
Emergency Fire Pump	1 x 25m ³ /hr @ 60m head

Internal:-

CO ₂ system	1 x fixed fire fighting system c/w alarms
------------------------	---

Life Saving/ Rescue Equipment

SOLAS Compliant

Miscellaneous/ Others

Sewage Treatment Plant	1 x 30Pax
Oily Water Separator	1 x 1m ³ /hr @ 2kg/cm ² head, 15ppm

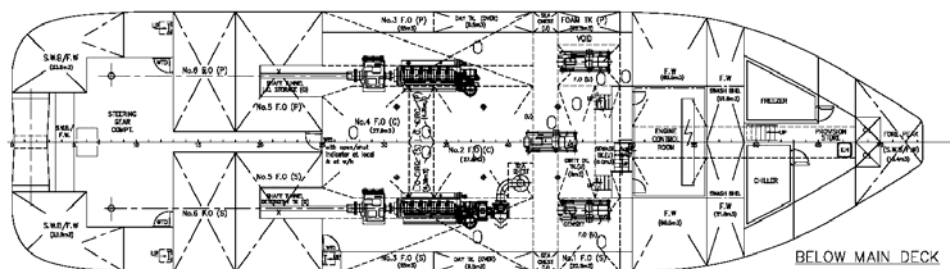
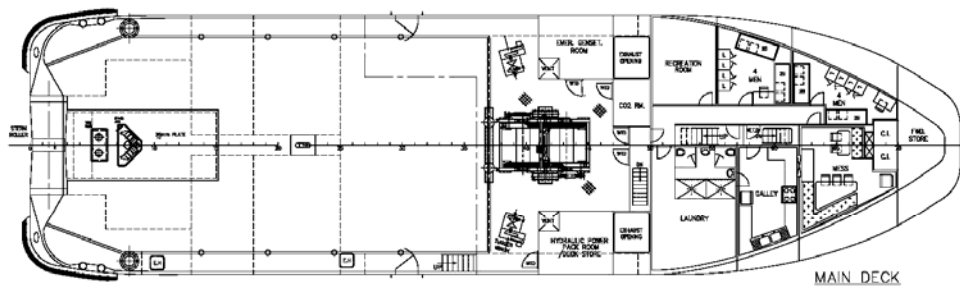
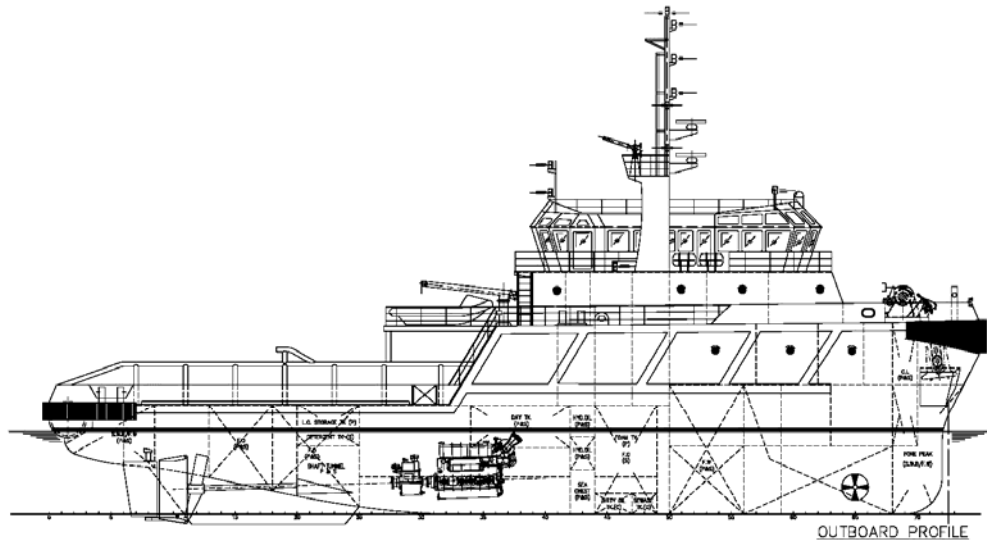
Swiber Offshore Marine Ltd

12 International Business Park , Cyberhub@IBP #04-01, Singapore 609920

Tel: +65 65050 800 | Fax: +65 65050 801 | Email: marketing@swiber.com | Website: www.swiber.com

SWIBER LINA

5,150 BHP Anchor Handling Tug



Swiber Offshore Marine Ltd

12 International Business Park , Cyberhub@IBP #04-01, Singapore 609920

Tel: +65 65050 800 | Fax: +65 65050 801 | Email: marketing@swiber.com | Website: www.swiber.com