

SWIBER CARINA

2,400 BHP Utility Supply Vessel



GENERAL SPECIFICATION

General Particulars

Year Build	2009
Flag	Singapore
Class	NKK
Notation	Offshore Utility Support Vessel

Performance and Consumption

Fuel Consumption	
At 100% MCR	6.29 Tons/day
At 85% MCR	5.35 Tons/day
Maximum Speed	11 Knots
Deck Strength	5 Ton/m ²

Principle Dimensions

Length Overall	40.0m
Length BP	34.9m
Breadth Moulded	11.8m
Depth Moulded	4.6m
Design Draft	3.8m
GRT / NRT	531T / 160T

Navigation and Communications System

Radar Range 64 nm	1 set
Echo Sounder	1 set
Magnetic Compass	1 set
Gyro Compass	1 set
GMDSS A1-2-3	1 set
- VHF Radio	1 set
- SSB Transceiver	2 sets
Speed Log, Doppler	1 set
2-way VHF/FM Handheld	2 sets
Radar Transponder	1 set
NAVTEX Receiver	1 set
EPIRB	1 set
GPS	1 set
Immarsat C	1 set

Machinery and Propulsion

Main Engine	2 x 1,200 BHP @ 1,800rpm Cummins KTA38M2
Reduction Gear	2 x Reintjes WAF562L 5.95:1
Propeller	2 x fixed pitch type (FPP)
Main Generator	2 x 260kW Caterpillar 3406C, 415V/3ph/50Hz 1 x 410kW Cummins KTA19DM1, 415V/3ph/50 Hz
Emergency Generator	1 x 36kW
Bow Tunnel Thruster	1 x 150kW tunnel fixed pitch type of 3 Tons thrust

Newcruz Offshore Marine Ltd

12 International Business Park , Cyberhub@IBP #03-02, Singapore 609920

Tel: +65 65050 600 | Fax: +65 65050 601 | Email: marketing@swiber.com | Website: www.swiber.com

SWIBER CARINA

2,400 BHP Utility Supply Vessel

GENERAL SPECIFICATION

Deck Machinery

Tugger Winch	1 x electro-hydraulic of 3 Tons
Windlass	1 x electro-hydraulic double gypsy type of 3 Tons @10m/min for 24mm diameter stud link chain
Capstan	1 x electro-hydraulic of 3 Tons
Stern Roller	1 x 4.0m length x 1.4m diameter @ SWL 150MT
Anchor	2 x stockless bower type, each of 780kg
Deck Crane	1 x 3 Tons @ 15m outreach

Accommodation

3 x 1 man cabin	3 men
2 x 2 men cabin	4 men
6 x 4 men cabin	<u>24 men</u>
Total	<u>31 men</u>

Tank

	Capacity	Discharge Rates
Fuel Oil	330m ³	65m ³ /hr @ 70m head
Fresh Water	160m ³	65m ³ /hr @ 70m head
Sea Water Ballast	52m ³	
Foam	7m ³	
Detergent	8m ³	

Fire-fighting/ Extinguishing System

Meet FiFi Class 1/2	
Fire Monitor	2 x 600m ³ /hr @ 10 bar
Fire Pump	1 x 1,200m ³ /hr @ 10 bar
Emergency Fire Pump	1 x 35m ³ /hr @ 10 bar

Life Saving/ Rescue Equipment

Rescue Boat	1 set davit crane c/w 6-men self-propelled rigid rescue boat
Life Raft	2 sets for 25 men
Life Buoy Ring	8 sets
Life Jackets	32 sets

Miscellaneous/ Others

Water Heater	1 x 200L for freshwater
Sewage Treatment Plant	1 x 32Pax + 1 x 15Pax
Oily Water Separator	1 x 0.5 m ³ /hr @ less than 15ppm

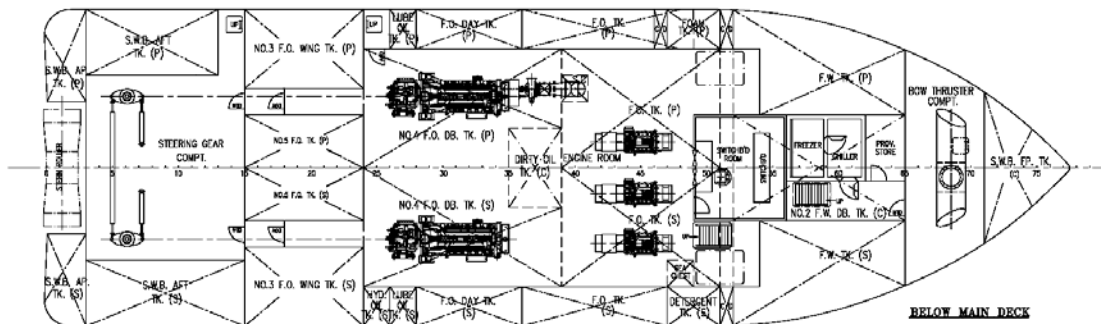
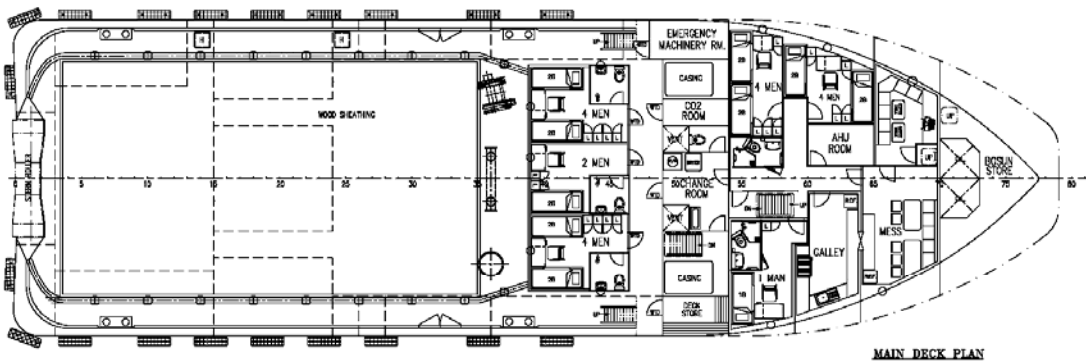
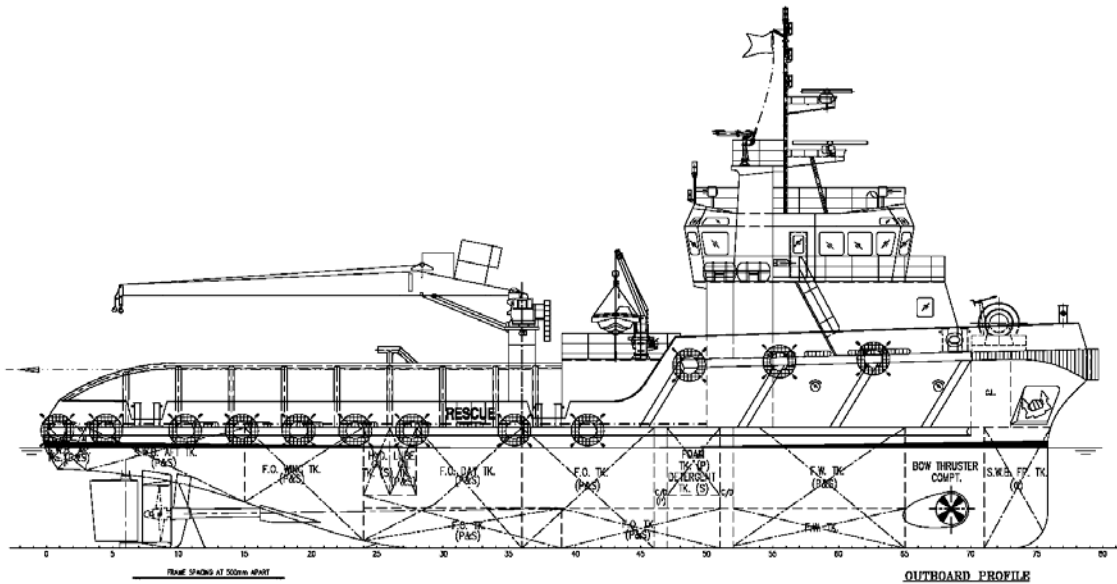
Newcruz Offshore Marine Ltd

12 International Business Park , Cyberhub@IBP #03-02, Singapore 609920

Tel: +65 65050 600 | Fax: +65 65050 601 | Email: marketing@swiber.com | Website: www.swiber.com

SWIBER CARINA

2,400 BHP Utility Supply Vessel



Newcruz Offshore Marine Ltd

12 International Business Park , Cyberhub@IBP #03-02, Singapore 609920

Tel: +65 65050 600 | Fax: +65 65050 601 | Email: marketing@swiber.com | Website: www.swiber.com