

SWIBER BHANWAR

4,750 BHP Anchor Handling Tug/ Supply



GENERAL SPECIFICATION

General Particulars

Year Built	2009
Flag	Singapore
Class	BV
Notation	I ✕ HULL ✕ MACH Tug; Unrestricted Navigation

Principal Dimensions

Length Overall	48.00m
Breadth Moulded	12.80m
Depth Moulded	4.60m
Design Draft	3.69m
GRT / NRT	735T / 220T
Deadweight	700 Tons

Machinery

Main Engine	2 x 2,375 BHP@ 1600rpm Caterpillar 3516B
Main Generator	3 x 260kW Caterpillar 3406, 415V/3pH/50Hz
Emergency Generator	1 x 50kW Perkins
Gearbox	2 x Reintjes LAF 863, Ratio 5.8:1
Propeller	2 x controllable pitch type with Kort Nozzles
Bow Thruster	1 x 300kW transverse type of Approx. 5T thrust

Performance & Consumption

Bollard Pull	58 Tons
Maximum Speed	13 Knots
Fuel Consumption	
with tow condition	11.49 Tons/day
without tow condition	8.45 Tons/day
Deck Loading	5 Ton/m ²
Clear Deck Area	250m ²

Nercruz Offshore Marine Ltd

12 International Business Park , Cyberhub@IBP #03-02, Singapore 609920

Tel: +65 65050 600 | Fax: +65 65050 601 | Email: marketing@swiber.com | Website: www.swiber.com

SWIBER BHANWAR

4,750 BHP Anchor Handling Tug/ Supply

GENERAL SPECIFICATION

Deck Machinery

Windlass	1 x electro hydraulic type of 5T @ 12m/min for 28mm dia. U2 chain
Anchor	2 x stockless bower type, stowed in anchor pockets, 1,020kg each
Towing Winch	1 x electro-hydraulic waterfall double drum type, ME Drum pull: 100MT (1 st layer) Brake holding: 200MT Drum capacity: (upper) 52mm
Shark Jaw/ Towing pin	1 set hydraulic retractable type of S.W.L 200T
Tugger winch	2 x electro hydraulic type of 10T @ 25m/min, ME
Capstan	2 x electro hydraulic type of 5T @ 15m/min, ME
Stern roller	3.5m x 1.45m dia, S.W.L 150T
Rescue Boat Davit	1 x single arm

Accommodation

2 x 1 man cabin =	2 men
2 x 2 men cabin =	4 men
5 x 4 men cabin =	<u>20 men</u>
Total	<u>26 men</u>
Hospital	1 man

Tank	Capacity	Discharge Rates
Fuel Oil	700m ³	1 x 75m ³ /hr @ 70m head
Fresh Water	250m ³	1 x 75m ³ /hr @ 70m head
W.B/D.W.	80m ³	1 x 50m ³ /hr @ 35m head

Fire Fighting/ Extinguishing System

Meet FIFI Class 1/2 with water curtain all-round

External (FFS):-

Fire Pumps	1 x 1,200m ³ /hr @ 11 bar
Fire Monitors	2 x 600m ³ /hr @ 11 bar

Internal:-

Emergency Fire Pump
CO₂ system in engine room
Fire/smoke detection and alarm system

Life Saving/ Rescue Equipment

SOLAS Compliant

Miscellaneous/ Others

Fresh Water Maker	1 x 2m ³ /hr @ 35m head
Sewage Treatment Plant	1 x 30Pax
Oily Water Separator	1 x 1.0m ³ /hr with oil content less than 15ppm

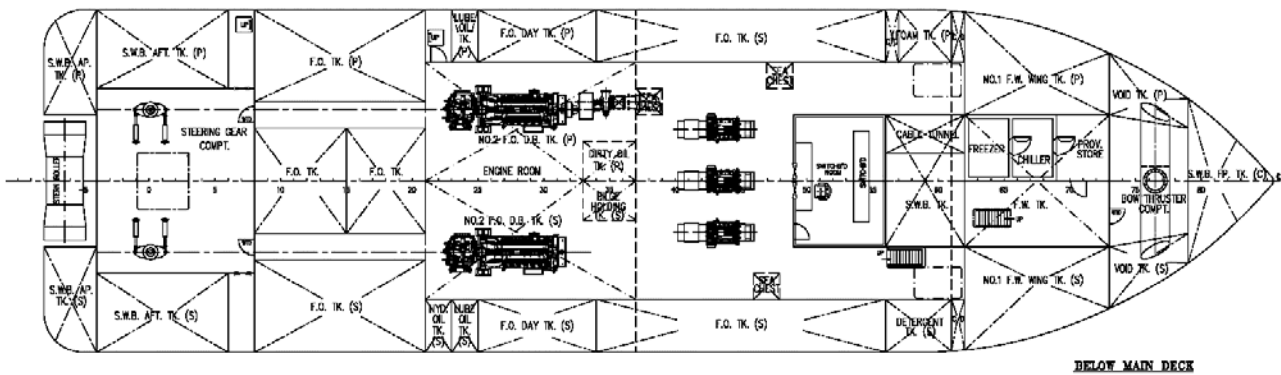
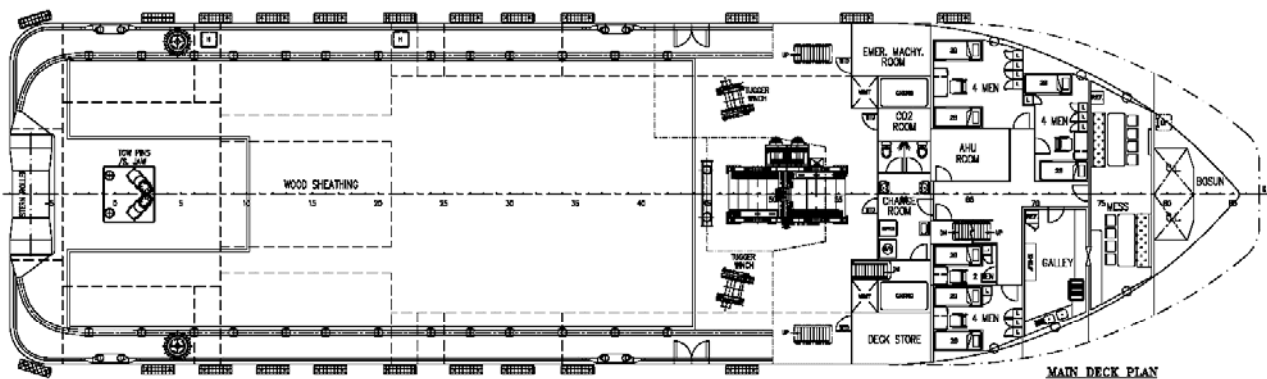
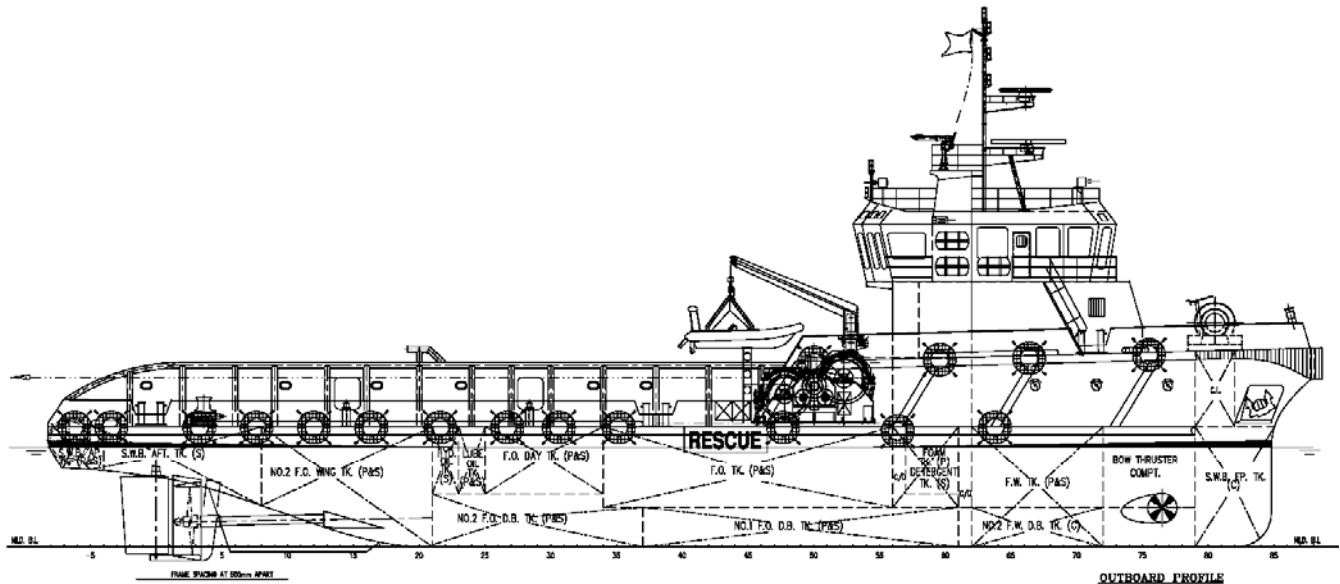
Nercruz Offshore Marine Ltd

12 International Business Park , Cyberhub@IBP #03-02, Singapore 609920

Tel: +65 65050 600 | Fax: +65 65050 601 | Email: marketing@swiber.com | Website: www.swiber.com

SWIBER BHANWAR

4,750 BHP Anchor Handling Tug/ Supply



Nercruz Offshore Marine Ltd

12 International Business Park , Cyberhub@IBP #03-02, Singapore 609920

Tel: +65 65050 600 | Fax: +65 65050 601 | Email: marketing@swiber.com | Website: www.swiber.com