

SWIBER 283

Flat Top Deck Cargo Barge (Ballastable)



GENERAL SPECIFICATION

General Particulars

Year Built	2006
Flag	Singapore
Class	ABS
Notation	✕ A1, Tank Barge

Principal Dimensions

Length Overall	282 ft (85.95m)
Breadth Moulded	90 ft (27.43m)
Depth Moulded	18 ft (5.49m)
GRT / NRT	3,384T / 1,015T
Deck Strength	15 Tons/m ²

Deck Fittings

Towing Bracket with Fairlead	4 x 40T SWL (P&S)
Mooring Bollards	10 x 350N.B.
Deck Stanchions	52pcs

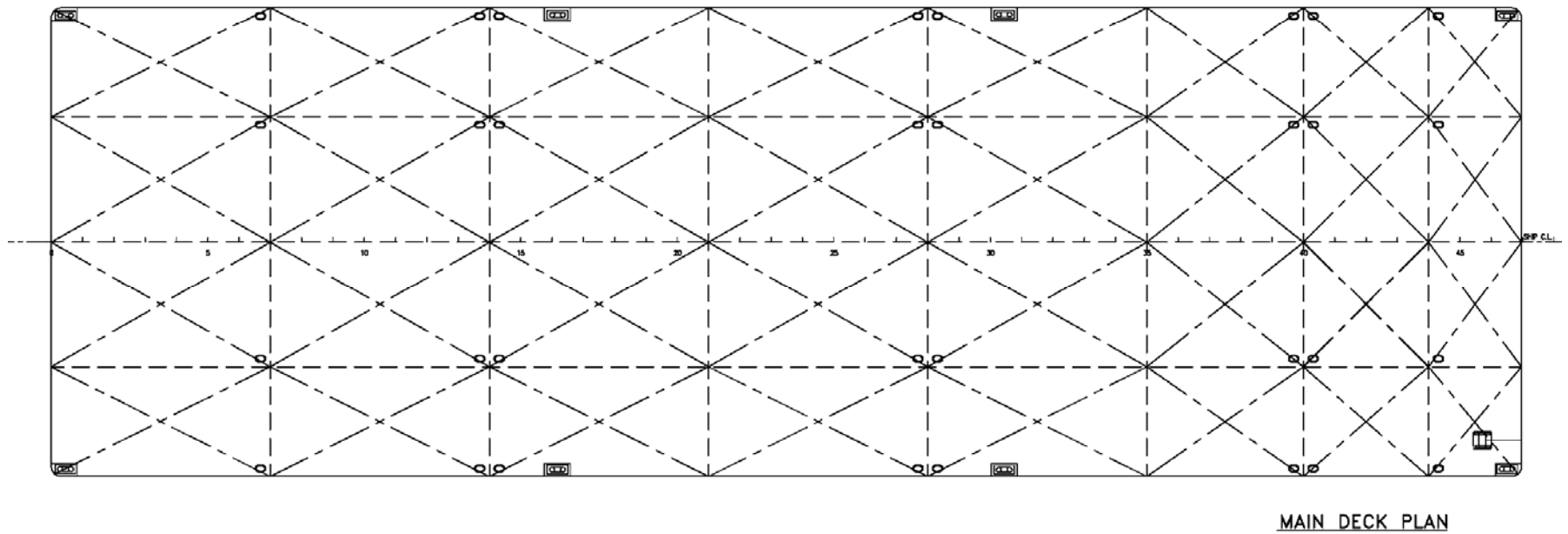
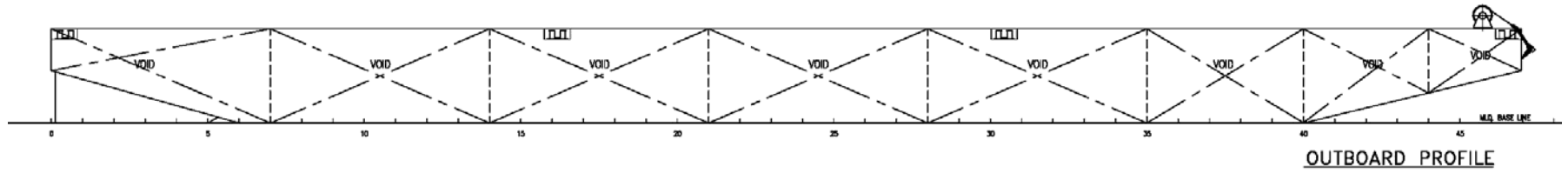
Scantling

Deck Plating	18mm
Bottom Plating	14mm
Side Shell Plating	14mm

Newcruz Offshore Marine Ltd

12 International Business Park , Cyberhub@IBP #03-02, Singapore 609920

Tel: +65 65050 600 | Fax: +65 65050 601 | Email: marketing@swiber.com | Website: www.swiber.com



Newcruz Offshore Marine Ltd

12 International Business Park , Cyberhub@IBP #03-02, Singapore 609920

Tel: +65 65050 600 | Fax: +65 65050 601 | Email: marketing@swiber.com | Website: www.swiber.com