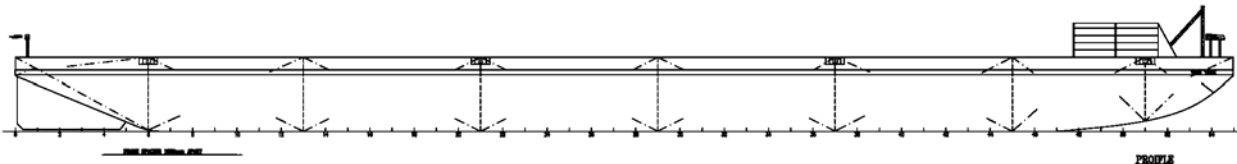


# NEWCRUZ 332

## Flat Top Deck Cargo Barge (Ballastable)



### GENERAL SPECIFICATION

#### General Particulars

Year Built	2011 (Q3)
Flag	TBA
Class	ABS
Notation	✕ A1 Steel Deck Barge

#### Principal Dimensions

Length Overall	330 ft (100.58m)
Breadth Moulded	100 ft (30.48m)
Depth Moulded	20 ft (6.10m)
Design Draft	4.5m (Approx.)
Deadweight	10,500 Tons (Approx.)
Deck Strength	20 Ton/m <sup>2</sup>

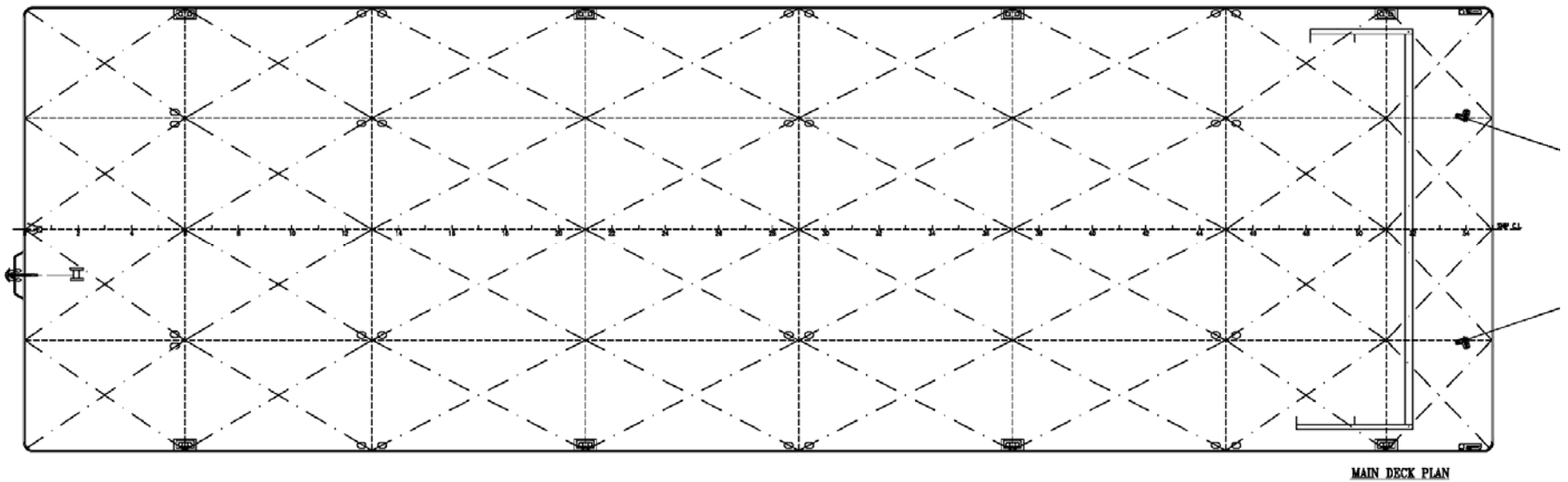
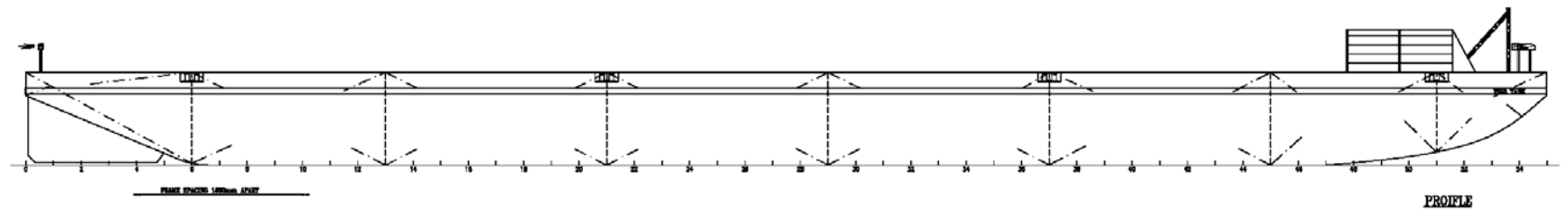
#### Scantling & Equipment

Deck Plating	20.00mm
Bottom Plating	14.00mm
Deck Plating	14.00/16.00mm
Longitudinal/Transverse Bulkhead	10.00mm
Mooring Bollards	8 double bitts
Towing Brackets	4 with 2 x 80 Tons SWL Schmitt are fitted on main deck fwd and aft
Anchor Winch	5 Tons hand operated
Anchor	2,100kg
Fender	16mm x 600mm double plate c/w slot welds to be fitted all round
Manhole	1 (600 x 400mm) for each tank with clear opening oval flush type, studs and nuts to be of stainless steel
Navigation Light	Bow lights (port and starboard) and stern light

#### Newcruz Offshore Marine Ltd

12 International Business Park , Cyberhub@IBP #03-02, Singapore 609920

Tel: +65 65050 600 | Fax: +65 65050 601 | Email: marketing@swiber.com | Website: www.swiber.com



**Newcruz Offshore Marine Ltd**

12 International Business Park , Cyberhub@IBP #03-02, Singapore 609920

Tel: +65 65050 600 | Fax: +65 65050 601 | Email: [marketing@swiber.com](mailto:marketing@swiber.com) | Website: [www.swiber.com](http://www.swiber.com)