

KREUZ 284

Flat Top Deck Cargo Barge (Ballastable)



GENERAL SPECIFICATION

General Particulars

Year Built	2008
Flag	Singapore
Class	ABS
Notation	✕ A1, Barge

Principal Dimensions

Length Overall	282 ft (85.95m)
Breadth Moulded	90 ft (27.43m)
Depth Moulded	18 ft (5.49m)
Deck Strength	15 Tons/m ²
GRT / NRT	3,427T / 1,028T

Deck Fittings

Anchor	1 1,500kg stockless bower anchor.
Anchor Winch	1 diesel-driven anchor winch of 10 Tons
Towing Brackets	Four (4) 80T SWL Schmidt towing brackets.
Mooring Bollards	8 mooring bollards of 12" N.B. heavy pipe
Anchor Wire Rope	120m x 28m dia. anchor galvanized wire rope with dia. 24m x 12.5m stud link chain.

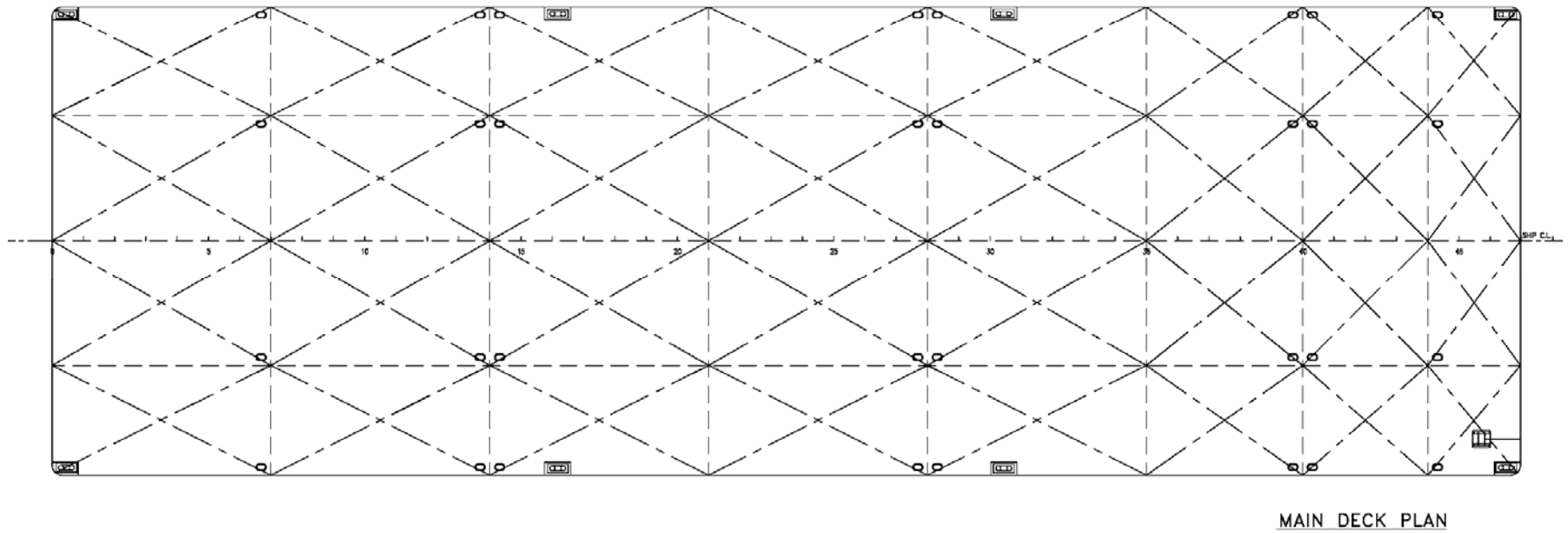
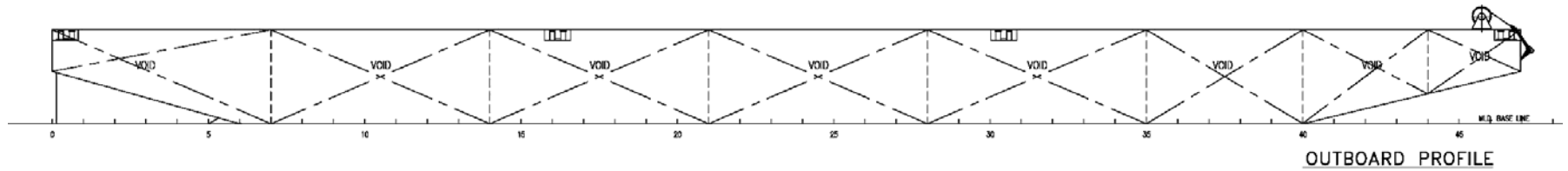
Scantling

Deck Plating	12mm and 16mm
Bottom Plating	12mm and 16mm
Side Shell Plating	12mm
Bulkhead Plating	10mm
Deck Longitudinal	12mm x 150mm x 90mm angle bar at 24" spacing
Bottom Longitudinal	9mm x 150mm x 90mm angle bar at 24" spacing
Side Longitudinal	9mm x 125mm x 75mm angle bar at 24" spacing

Newcruz Offshore Marine Ltd

12 International Business Park , Cyberhub@IBP #03-02, Singapore 609920

Tel: +65 65050 600 | Fax: +65 65050 601 | Email: marketing@swiber.com | Website: www.swiber.com



Newcruz Offshore Marine Ltd

12 International Business Park , Cyberhub@IBP #03-02, Singapore 609920

Tel: +65 65050 600 | Fax: +65 65050 601 | Email: marketing@swiber.com | Website: www.swiber.com