



SWIBER KAIZEN4000

4,200T Derrick Crane / Accommodation Work Barge

GENERAL SPECIFICATION

General Particulars

Year Built	2012
Flag	Panama
Class	BV
Notation	✕ HULL, ✕ MACH, Offshore Service Barge, Lifting Accommodation, ✕ ALM Special Purpose Ship Unrestricted Navigation
Length Overall	156.00m
Breadth Moulded	50.00m
Depth Moulded	12.00m
Design Draft	6.50m to 7.50m
Scantling Draft	8.00m
Displacement	53,600 Tons
GRT / NRT	37,000T / 11,100T

Deck Equipment

Mooring Winches	12 x VFD mooring winch, 130 MT SWL first layer
Anchors	12 x 15T flipper delta type
Emergency Anchor	2 units
Capstan	3 x 20MT
Air Tugger Winch	1 unit
Pendent Lines and Fittings	12 units
Pendent Buoys	12 units
"A" Frame	1 unit
Anchor Rope	12 x 1,500m x 58mm dia. 6 x 36 IWRC wire rope
Towing Bridle	2 sets (1 emergency)
Deck Crane	1 x 250MT crawler crane + 1 x 90MT pedestal crane man-riding approved

Main Crane Lifting Capability

Amclyde Model 80	
(1) Main Hoist	
No Load Speed	6.0m/min
Special Revolving - Lifting Capacity	3,800MT @ 21m radius @ ±1.5° trim/ list 780MT @ 80m radius @ ±1.5° trim/ list
Lifting Speed	3.5m/min

Swiber Offshore Construction Pte Ltd

12 International Business Park , Cyberhub@IBP #04-01/04, Singapore 609920

Tel: +65 65050 800 | Fax: +65 65050 801 | Email: marketing@swiber.com | Website: www.swiber.com

SWIBER KAIZEN4000

4,200T Derrick Crane/ Accommodation Work Barge

GENERAL SPECIFICATION

Main Crane Lifting Capability

Full Revolving	
- Lifting Capacity	3,200MT @ 21m radius @ ±3.5° trim/list 720MT @ 80m radius @ ±3.5° trim/list
- Lifting Speed	5.0m/min
(2) Auxiliary #1	
- Lifting Capacity	800MT @ 25m radius @ ±3.5° trim/list 500MT @ 95m radius @ ±3.5° trim/list
- Lifting Speed	16.5m/min
(3) Auxiliary #2	
- Lifting Capacity	200MT @ 30m radius @ ±3.5° trim/list 100MT @ 109m radius @ ±3.5° trim/list
- Lifting Speed	57.0m/min
(4) Whip	
- Lifting Capacity	50MT @ 95m radius @ ±3.5° trim/list
- Lifting Speed	60.0m/min
(5) Tugger Line Winches	
- Main Block	25.5MT @ 13m/min
- Auxiliary #1	25.5MT @ 13m/min
- Auxiliary #2	25.5MT @ 13m/min
- Load Control #1	40.0MT @ 15m/min
- Load Control #2	40.0MT @ 15m/min
(6) Length of Boom	
- To Main Block	80.0m
- To Auxiliary #1 Block	95.0m
- To Auxiliary #2 Block	105.0m
- To Whip Block	86.0m

Cargo Capacities

Clear Deck Area	3,800m ²
Main Deck Sheltered Area	1,300m ²
Deck Strength	12MT/m ²

Tanks

	Capacity
Fuel Oil	3,100MT
Ballast Water	44,500MT
Fresh Water	3,300MT

Discharge Rate

2 x 60m ³ /hr @ 5 bar
4 x 3,000m ³ /hr @ 2.5 bar + 2 x 1,500m ³ /hr @ 2.5 bar
2 x 60m ³ /hr @ 3.0 bar

Swiber Offshore Construction Pte Ltd

12 International Business Park , Cyberhub@IBP #04-01/04, Singapore 609920

Tel: +65 65050 800 | Fax: +65 65050 801 | Email: marketing@swiber.com | Website: www.swiber.com

SWIBER KAIZEN4000

4,200T Derrick Crane/ Accommodation Work Barge

GENERAL SPECIFICATION

GMDSS & Navigation Equipment

GMDSS	1 unit
Helicopter Communication Equipment	1 unit
Gyro Compass	1 unit
Magnetic Compass	1 unit
EPIRB	1 unit
Internal Telephone/PA	1 unit
Radar	2 units
Echo Sounder	1 unit
DGPS Satellite Navigator	2 units
Fog Horn/ Whistles	2 units
ALDIS Lamp	1 unit

Machinery

Main Generator	6 x 2,400 kW, 6,600V/3Ph/50Hz, 400V/3Ph/50Hz, 220V/1Ph/50Hz
Emergency Generator	1 x 800kW, 400V/3Ph/50Hz

Accommodation

Single Berth	8
Double Berth	22
Four (4) men berth	67
Stores	11

Fire Fighting & Survival Equipment

Fire Pump	2 x 115m ³ /hr @ 11 bar
Emergency Fire Pump	1 x 75m ³ /hr @ 6.5 bar
Life Rafts	40 x 25-men
Fast Rescue Boat	2 x 120 HP engine

Fire Fighting and Life Saving Systems SOLAS Complaint

Helideck

Suitable for Sikrosky S61N and S-92 Helicopter
Statement of Fact for CAP 437 compliance

Other Facilities

Hospital	1
Offices	10
Conference Rooms	4
Mess rooms	1 x 150-men
Stores	11
Movie Room	1 x 30-men
Gym Room	2 (Main Deck and Deck 1)
Recreation Room	1
Prayer Room	1

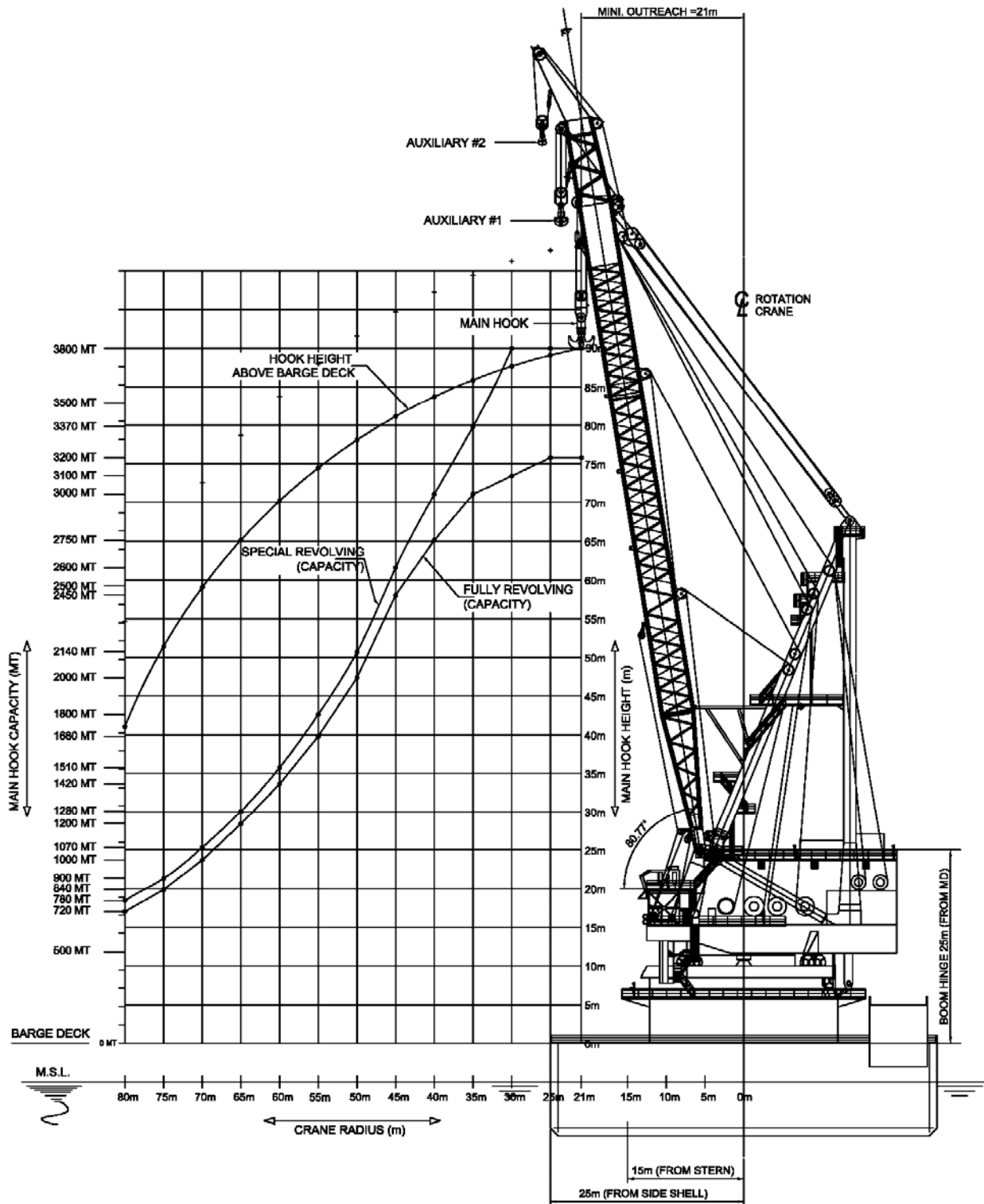
Miscellaneous/ Others

Oily Water Separator	1 x 5m ³ /hr @ 15ppm
Sewage Treatment Plant	2 x 200-men/day
Fresh Water Maker	1 x 50T + 2 x 65T
Incinerator	1 unit
Compactor	1 unit

Swiber Offshore Construction Pte Ltd

12 International Business Park , Cyberhub@IBP #04-01/04, Singapore 609920

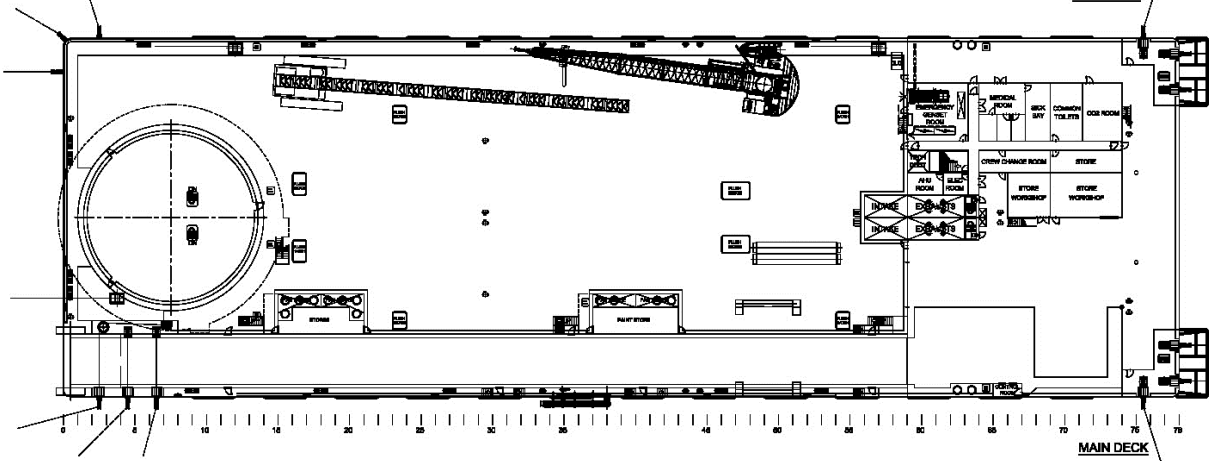
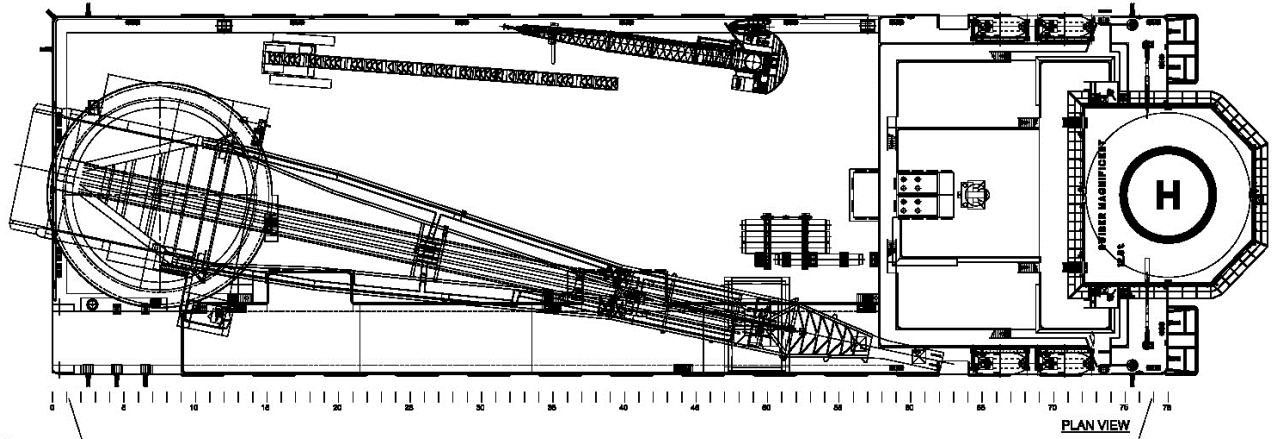
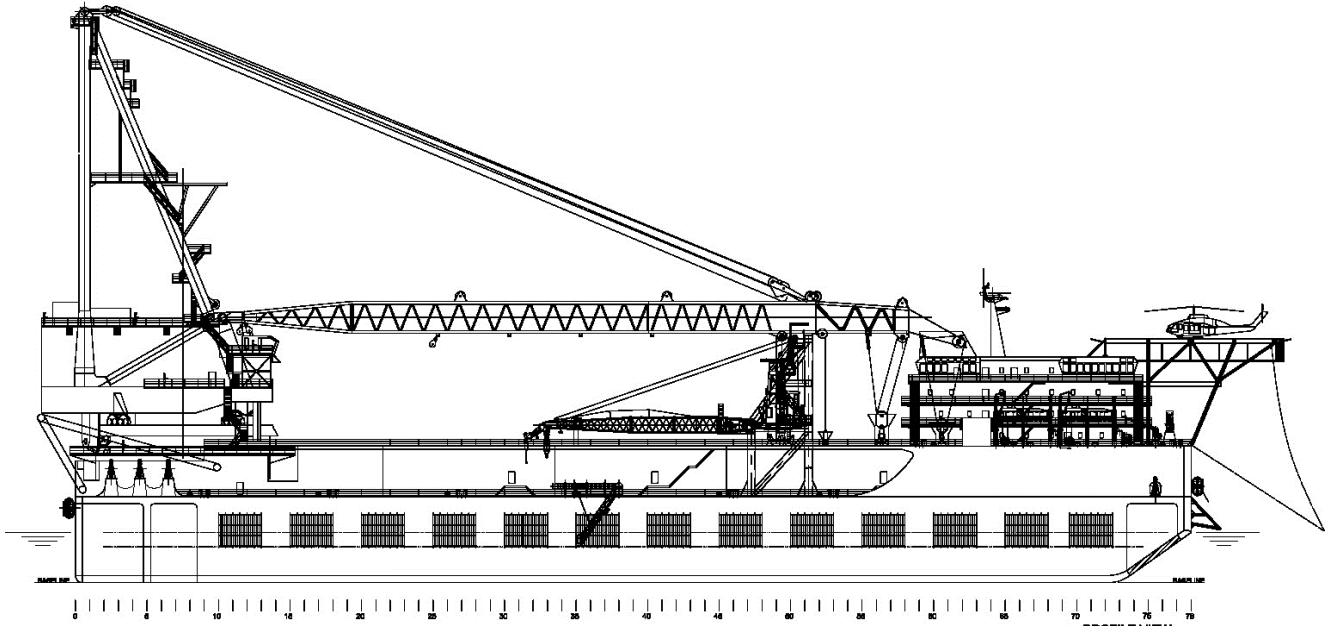
Tel: +65 65050 800 | Fax: +65 65050 801 | Email: marketing@swiber.com | Website: www.swiber.com



Swiber Offshore Construction Pte Ltd

12 International Business Park , Cyberhub@IBP #04-01/04, Singapore 609920

Tel: +65 65050 800 | Fax: +65 65050 801 | Email: marketing@swiber.com | Website: www.swiber.com



Swiber Offshore Construction Pte Ltd

12 International Business Park , Cyberhub@IBP #04-01/04, Singapore 609920

Tel: +65 65050 800 | Fax: +65 65050 801 | Email: marketing@swiber.com | Website: www.swiber.com