

SWIBER PJW 3000

3,000T Derrick Pipe-lay/ Accommodation Work Barge



GENERAL SPECIFICATION

General Particulars

Year Build	2010
Flag	Panama
Class	ABS
Notation	✕ A1, Barge
Description	Accommodation/ Derrick Pipelay Barge

Principal Dimensions

Length Overall	169.0m
Breadth Moulded	46 .0m
Depth Moulded	13.5m
Design Draft	7.0 to 9.0m
Scantling Draft	9.0m
Displacement	62,000T
GRT / NRT	40,612T / 12,183T

Power Supply

Main Generators	4 x 2,400kW @ 900rpm, 450V/3ph/60Hz, Hyundai Himsen 8H 25/33
Emergency Generator	1 x 315kW 3-phase/450 V/60Hz

Derrick Crane

Main Hook (Fixed)	3,000T @ 30m
- Max Height	80m above main deck
- Hoisting Speed	1.5 to 3.0m/min
- Part Load Hoisting Speed	0 – 3m/min
Main Hook (Revolving)	2,000T @ 35m
- Max Height	80m above main deck
- Hoisting Speed	0 – 1.5m/min
- Part Load Hoisting Speed	0 – 3m/min
Auxiliary Hook	600T @ 60m
- Max Height	104m above main deck
- Hoisting Speed	0 – 10m/min

Deck Area & Loading

Deck Load	10 T/m ²
Timber Deck Sheathing Area	1,200m ²
Clear Deck Area	1,800m ²

Swiber Offshore Construction Pte Ltd

12 International Business Park , Cyberhub@IBP #04-01/04, Singapore 609920

Tel: +65 65050 800 | Fax: +65 65050 801 | Email: marketing@swiber.com | Website: www.swiber.com

SWIBER PJW 3000

3,000T Derrick Pipe-lay/ Accommodation Work Barge

GENERAL SPECIFICATION

Anchor and Mooring System

Anchor	12 x 12 Tons Stevpris High-holding power anchor
Anchor Wire	12 x Ø 76mm @ 1,100kN
Mooring Winches	2 x 200kN
Capacity of Wire Rope	200kN
Load of Warping end	150kN
Capstan	4 x 150kN
Mooring Rope	Ø 80mm @ 150kN

Elevator

Equipped with one multi-purpose elevator load 1000kg, speed 0.63m/min

Heli-deck

For SIKORSKY S-61N Helicopter

Accommodation

12 x 1 man cabin	12 men
51 x 2 men cabin	102 men
49 x 4 men cabin	<u>196 men</u>
Total	<u>310 men</u>

All cabins fully air-conditioned, comply with ILO 92, IMO Resolution A468 (XII)

Pipe-Lay Capability

Hydraulic pipe line up station with transverse and longitudinal conveyors

Maximum water depth	300m (12" pipe)
Pipe-lay technique	S-Lay single joints
Pipe outer diameters range	4" to 48"
Maximum pipe joint weight	30,000kg
Pipe length	40 feet
Automatic tensioners	2 x 100T nominal pull/ Remacut
Tensioner paying-out speed	40m/min
A & R winch	1x200T nominal pull/ Remacut
A&R Winch paying-out speed	22m/min (outer layer)
Applicable paying-in speed	0 – 15m/min
Welding Stations	5 x manual or automatic
NDT	1 x radiography or U.T.
Repair Station	1 set
Coating/surface Preparation	1 set
Welding Machines	16 x 400 amp
Stinger	1 st piece 42.6m; 2 nd piece 34m
Hydraulic Winches	2 x 45MT stinger winches

Tanks

Fuel Oil

Capacity

4,038m³

Discharge Rates

2 x 30m³/hr, 0.4MPa,
Hebei Hengsheng
3GCL85/46-4
4 x 1,200m³/hr @ 39m
2 x 35m³/hr, 0.6MPa,
KSB
2x95m³/hr, 0.25MPa,
KSB

Ballast Water

34,673m³

Fresh Water

2,600m³

Sewage

1,000m³

Swiber Offshore Construction Pte Ltd

12 International Business Park , Cyberhub@IBP #04-01/04, Singapore 609920

Tel: +65 65050 800 | Fax: +65 65050 801 | Email: marketing@swiber.com | Website: www.swiber.com

SWIBER PJW 3000

3,000T Derrick Pipe-lay/ Accommodation Work Barge

GENERAL SPECIFICATION

GMDSS & Navigation Equipment

GMDSS	1 x GC-80, SIMRAD
Immarsat	1 x IMMARSAT-C TT-3026, SAILOR
VHF Radio	2 x VHF RT5022, SSAILOR
Navtex Receiver	1 x NX-700A, FURUNO
SART	2 x S4, MCMURDO
EPIRB	1 x E5, MCMURDO
DGPS	2 x GP-150, FURUNO
AIS	1 x FA-150, FURUNO
Marine Radar	2 x T3402C 30012S, ONSILIUM
Echo Sounder	2 x FE-700, FURUNO
GPS	2 x GP-150, FURUNO
Weather Fax	1 x FAX-408, FURUNO
Anemometer	1 x OMC-160, OBSERVATOR
Shipping Security Alarm	1 x TT-3000E, SAILOR

Fire-Fighting and Life-Saving Systems

Fire Pump	2 x 150m ³ /hr, 0.88MPa, KSB
Emergency Fire Pump	1 x 150m ³ /hr, 0.88MPa, KSB
Life Boat	2 x 70Pax, Jiangyin Beihai
Rescue Boats	2 x 70Pax, Jiangyin Beihai

Service Pumps

Bilge Pump

Discharge Rates

2 x 220m³/hr, 0.25MPa, KSB

Miscellaneous/ Others

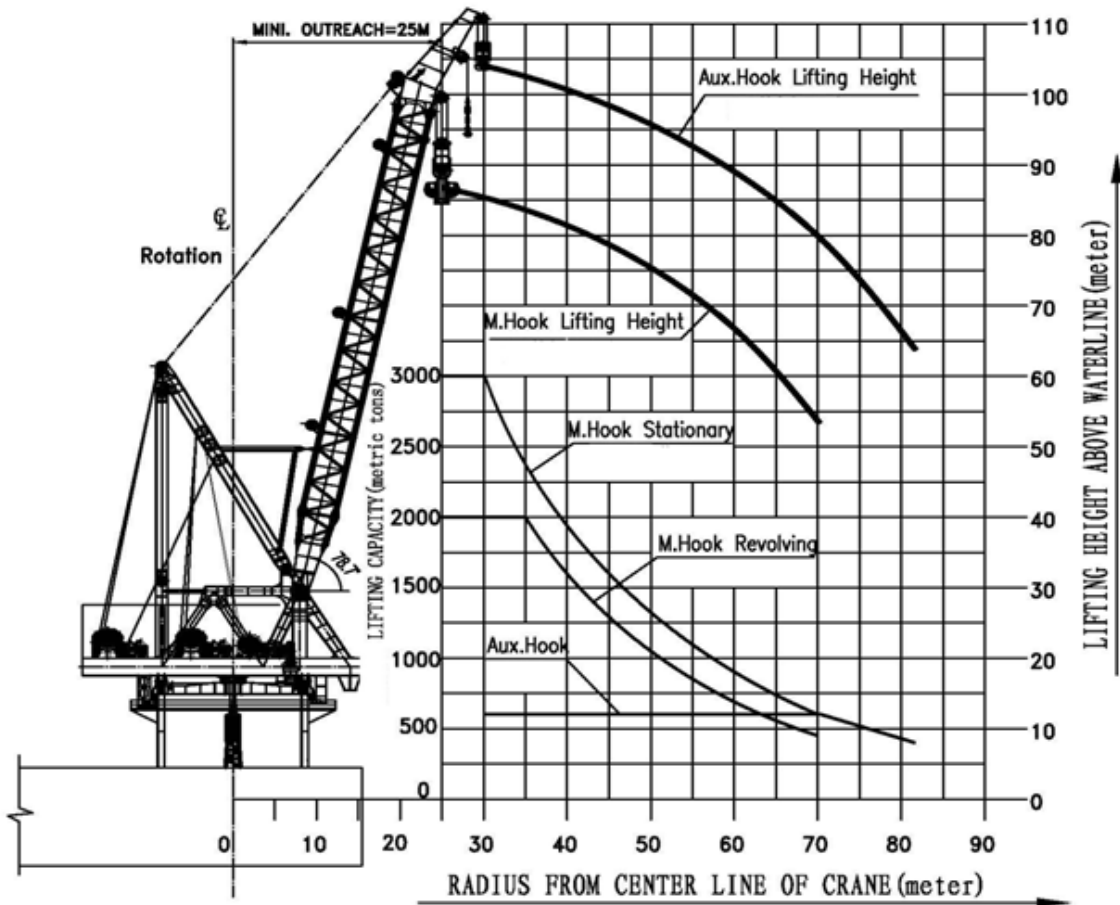
Oily Water Separator	2 x 5m ³ /hr, Taiko Kangda
Sewage Treatment Plant	2 x 300-men WCMBR-300
Freshwater Maker	2 x 46m ³ /day, Village Marine

Swiber Offshore Construction Pte Ltd

12 International Business Park , Cyberhub@IBP #04-01/04, Singapore 609920

Tel: +65 65050 800 | Fax: +65 65050 801 | Email: marketing@swiber.com | Website: www.swiber.com

SWIBER PJW 3000 3,000T Derrick Pipe-lay/ Accommodation Work Barge

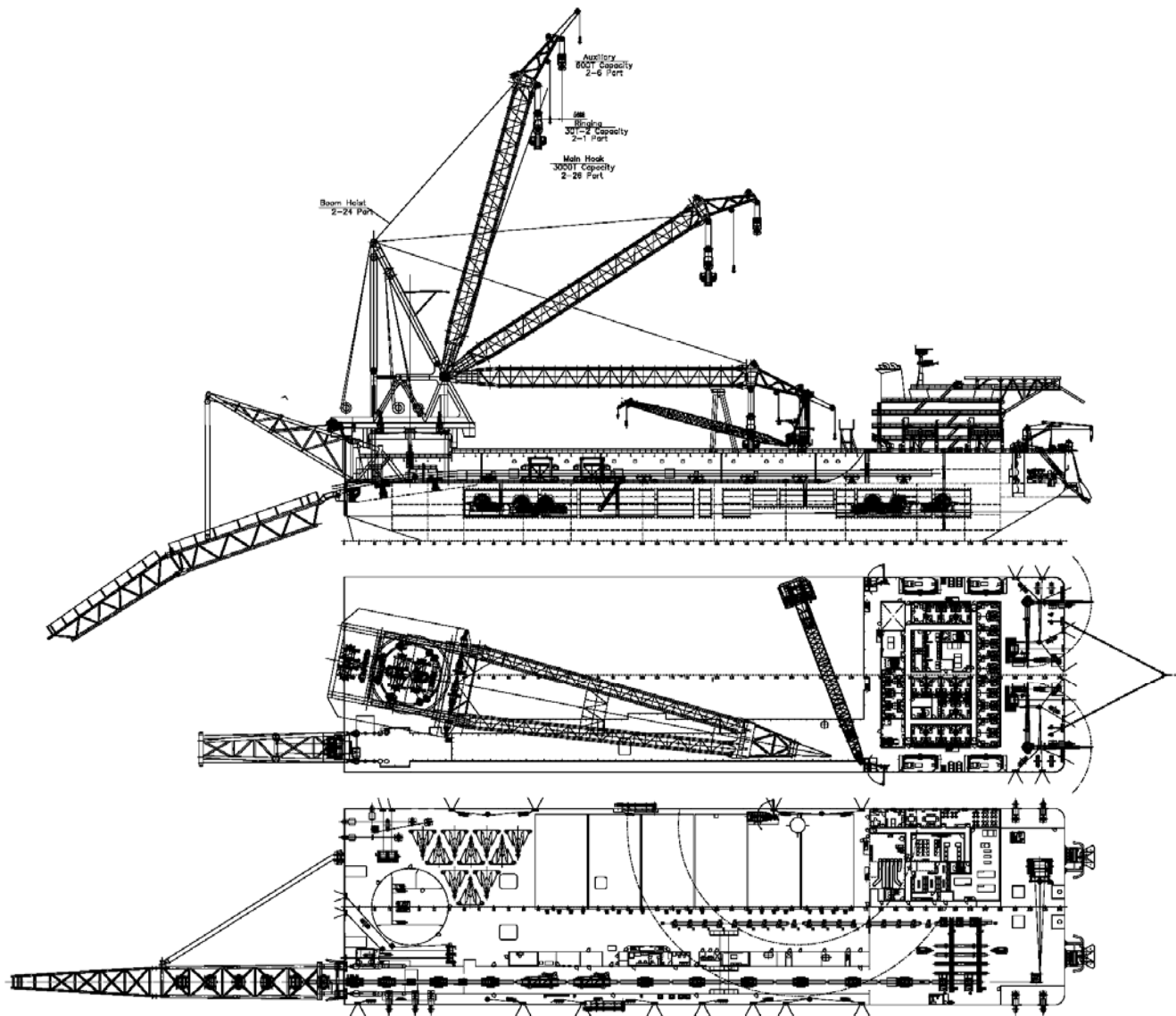


Crane Capacity Rating Chart

Swiber Offshore Construction Pte Ltd

12 International Business Park , Cyberhub@IBP #04-01/04, Singapore 609920

Tel: +65 65050 800 | Fax: +65 65050 801 | Email: marketing@swiber.com | Website: www.swiber.com



Swiber Offshore Construction Pte Ltd

12 International Business Park , Cyberhub@IBP #04-01/04, Singapore 609920

Tel: +65 65050 800 | Fax: +65 65050 801 | Email: marketing@swiber.com | Website: www.swiber.com