

KREUZ SUPPORTER

Dive Support & Construction Work Barge



GENERAL SPECIFICATION

General Particulars

| | |
|-------------|------------------------------|
| Year Build | 2006 |
| Flag | Panama |
| Class | ABS |
| Notation | ✕ A1, Barge |
| Description | Accommodation and Work Barge |

Principal Dimensions

| | |
|-----------------|-----------------|
| Length Overall | 100.58m |
| Breadth Moulded | 27.43m |
| Depth Moulded | 6.10m |
| Design Draft | 1.80m |
| GRT / NRT | 5,650T / 1,695T |

Power Supply

| | |
|---------------------|--|
| Diesel Engine | 2 x Komatsu 700kVA @ 1,500rpm 1 x Mitsubishi 700kVA @ 1,500rpm |
| Main Generators | 2 x diesel oil electric generator, Cummins KTA38-D(M) 440V/3ph/60Hz 664kW @ 1,500rpm |
| Emergency Generator | 1 x Mitsubishi, 1,500rpm 250kVA/3ph/60Hz |
| Alternator | 700kVA |

Crane

| | |
|-----------------|---|
| Main Crane | Manitowoc, Model 777 crawler crane 200 Tons lifting capacity 823m heavy-lift beam |
| Secondary Crane | Manitowoc CC.200-2 crawler crane 58.6 Tons lifting capacity 48.8m boom length |

Anchor and Mooring System

| | |
|----------------|--|
| Anchor Winch | 4 x 45T single drum, 75T brake holding capacity 4 x 35T single drum, 55T brake holding capacity |
| Mooring Cables | 42mm x 800m 42mm x 1000m |
| Anchors | 8 x 10T delta flipper |

Saturation Diving System

Year Built - 2008
12 men Hyperbaric Rescue Chamber – IMCA compliant, ABS Class & 9 men Living Chamber on Skid, Saturation system with 3 men Bell and independent (dead ship) HRC launching system complaint to Class requirements

Kreuz Subsea Marine Ltd

12 International Business Park , Cyberhub@IBP #02-02, Singapore 609920

Tel: +65 65050 800 | Fax: +65 65050 801 | Email: marketing@swiber.com | Website: www.swiber.com

KREUZ SUPPORTER

Dive Support & Construction Work Barge

GENERAL SPECIFICATION

Davits

5 x 30MT removable davits

Accommodation

120 men Complement

Deck Loading Capacity

Deck Loading 15 Tons/m²
Clear Working Area 1,400m²

Fire Fighting and Safety Equipment

Fire Water Pump 2 x 608 GPM electric fire pumps
Fire Hose 18 nos. x 20m length
Portable Fire Extinguishers 1 x 45 ltr foam, 24 x 9 ltr foam, 24 x 5kg DCP, 1 X 1.8kg CO₂, 3 x 5kg CO₂
Smoke Detectors 84 nos. + 13 Nos. thermal detectors
Sprinkle System 165 sprinkle heads throughout accommodation
Self Inflatable Life Rafts 16 x 25 men life rafts
Life Jackets 359 nos.
Breathing Apparatus 4 nos.

Tanks

Fuel Oil 440m³
Base Oil 440m³
Fresh Water 900m³
Non Potable Fresh Water 900m³

Capacity

Service Pumps

Submersible Sea Water Cooling Pump 2 x 216m³/hr @ 35m head
Submersible Fresh Water Pump 2 x 10m³/hr @ 60m head
Submersible Fire Water Pump 2 x 75m³/hr @ 70m head
Submersible Sprinkle Pump 1 x 1600l/min @ 60m head

Discharge Rates

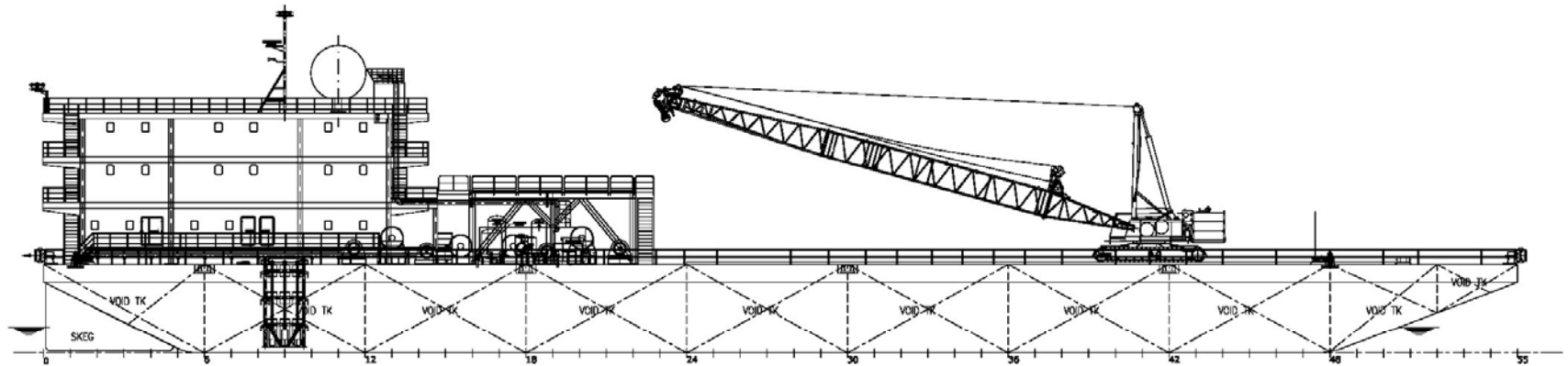
Miscellaneous/ Others

Fresh Water Maker 1 x 64,000 liters/day RO Plant
Garbage Compactor 1 x 40 ft³
Sewage Treatment Plant 1 x IMO approved ST plant for 150 men (min.), DNZ-SKA 150, Biomaster
Air Compressors Atlas Copco GA30⁺-10, 1 x 750 CFM @ 150 psi

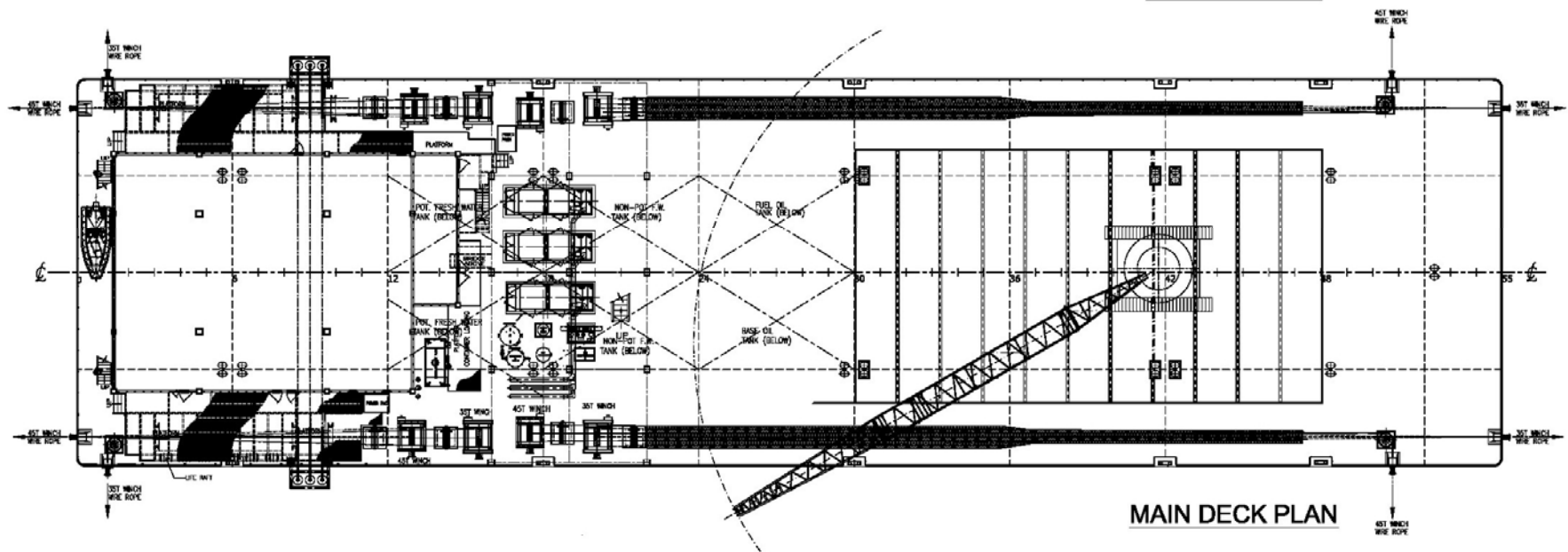
Kreuz Subsea Marine Ltd

12 International Business Park , Cyberhub@IBP #02-02, Singapore 609920

Tel: +65 65050 800 | Fax: +65 65050 801 | Email: marketing@swiber.com | Website: www.swiber.com



PROFILE VIEW



MAIN DECK PLAN

Kreuz Subsea Marine Ltd

12 International Business Park , Cyberhub@IBP #02-02, Singapore 609920

Tel: +65 65050 800 | Fax: +65 65050 801 | Email: marketing@swiber.com | Website: www.swiber.com