

KREUZ GLORIOUS Accommodation Work Barge



GENERAL SPECIFICATION

General Particulars

Year Built	2006
Flag	Panama
Class	ABS
Notation	✳ A1 Accommodation Barge
Description	Accommodation Barge

General Description

Accommodation work barge with eight point mooring system. A helideck and accommodation for 286 men. It is equipped to support:

- Topside Hook-up & Maintenance
- Mooring System Installation
- Diving Support

Dimensions

Length Overall	113.08m
Breadth Moulded	28.04m
Depth Moulded	6.93m
Draft	4.80m
GRT / NRT	8,950T / 2,685T

Pedestal Crane

Model	Revolving Seatrax Model S7220
Main Hoist Lifting Capacity	60 Tons (recent load test)
Auxiliary Hoist Lifting Capacity	14 Tons (recent load test)
Whip Line Lifting Capacity	13,970Kg
Max. Boom Length	30m

Deck Area

Clear Working Area	1,200m ²
Deck Loading Capacity	10 Ton/m ²

Accommodation

	286-men fully air conditioned
10 x 1 man cabin	10 men
12 x 2 men cabin	24 men
42 x 4 men cabin	168 men
14 x 6 men cabin	<u>84 men</u>
Total	<u>286 men</u>

Number of persons which the ship is certified to carry 290 men

Power Supply

Power Source	440V/220V/60Hz/3Ph
Main Generator	3 x 657kW @ 1800rpm, Caterpillar 3508
Emergency Generator	1 x 250kW (Cummins NTA 855-G1)
Fuel Consumption	approx. 4 Tons per day

Kreuz Subsea Marine Ltd

12 International Business Park , Cyberhub@IBP #02-02, Singapore 609920

Tel: +65 65050 800 | Fax: +65 65050 801 | Email: marketing@swiber.com | Website: www.swiber.com

KREUZ GLORIOUS

Accommodation Work Barge

GENERAL SPECIFICATION

Mooring Equipment

Mooring Winch	8 points mooring winch with Dyna liner load cells 75 Tons driven by diesel engine
Anchor Mooring	4 x AMHOIST AM 77 EF, waterfall type
Winches	Double drum
Drum Capacity	950m x 42mm ϕ wire rope (12 layers)
Rated pull	50 Tons x 5m/min (first layer)
Rated pull	10 Tons x 15m/min
Brake Force	100 Tons (first layer)
Clutch	Friction type
Anchors	9 x 10 Tons delta flipper
Air Tugger Winches	4 x 10 Tons, 5 x 5 Tons and 3 x 2 Tons
Anchor Buoy	8 Units
Damage Prevention Buoy	6 Units

Fork Lift

Toyota 5 Tons capacity with hard tyre

Tank

	Capacity
Fuel Oil	1,014m ³
Ballast / Drill Water	8,236m ³
Fresh Water	2,363m ³

Service Pump Discharge Rate

Ballast Pump	1 x 300m ³ /hr @ 40m head
Fire Pump	1 x 300m ³ /hr
Emergency Fire Pump	1 x 300m ³ /hr diesel driven

Safety & Fire Fighting

Life Rafts (Inflatable)	36 x 25-men
Life Jackets in Accommodation	305
Life Jackets Solas Approved	4 boxes x 40 unit
Life Ring Buoy with Light and Line	27 units
MOB Light / Smoke Signal with Life Ring and Line	2 units
Rescue Boat for 6-men	1 x 29 HP in board diesel engine
Fixed CO ₂	1 unit complete under deck machinery spaces, Plus 1 x fixed system in Paint Store
Portable Mixed Fire Extinguisher	112 with 57 spare
Fire Hydrants with Hose & Jet/Spray Nozzle	41 units
Foam System for Helideck	Complete System x Fixed Hydrants
Multi Gas Portable Detector	11 units
Fire Suits	8 units
Breathing Apparatus	8 set plus 13 spare bottle
EEBD	9 set
Stretchers Para Guard	1 units
Stretchers Rigid	3 units
General Alarm	fix 6 x 500kW (400V/3Ph/50Hz)
Fire Detection System / Alarm System	1 unit coverage entire barge
Water Sprinkler System	1 unit coverage entire barge
Helicopter Crash Boxes	2 units
Work Vest SOLAS Approved	90 units
Aluminum Work Boat	1 unit (70 HP O/B Petrol Engine)

Kreuz Subsea Marine Ltd

12 International Business Park , Cyberhub@IBP #02-02, Singapore 609920

Tel: +65 65050 800 | Fax: +65 65050 801 | Email: marketing@swiber.com | Website: www.swiber.com

KREUZ GLORIOUS

Accommodation Work Barge

GENERAL SPECIFICATION

GMDSS & Navigation Equipment

Navtex Receiver	1 x FURUNO NX700B
Echo Sounder	1 x FURONO FE700
GPS Navigator	2 x FURONO GP-150
SSB Transceiver	1 x FURONO FS1570
VHF Transceiver	2 x FM8800 + 2 x Motorola GCN114B
Gyro Compass	1 x Anschutz STD-22
Immarsat-C Set	1 unit For GMDSS A1, 2 & 3 areas, and SSAS System
Radar	1 unit coverage entire barge
Barometer	1 unit
Hand Held Emergency	3 units
GMDSS with spare battery	
EPIRB	2 units
SART	2 units
Anemometer	2 unit
Air Band Transceiver	1 unit
Radio Beacon Transmitter for Helicopter Operation	1 unit
Mini M Satellite Phone	1 unit
V-Sat for data / e-mail / phone	1 unit
UHF Fix stations	2 units
UHF Portable Radio for Barge Operations	12 units

Deck Facility

Mechanic & Electrical Workshop
Warehouse
Paint store

Other Facilities

Client Offices
Conference Room
Hospital with 2 beds
TV/Video Recreation Room
Prayer Room
Mess room (Seating 12 officers / 100 Crew)
Gymnasium
Galley & Laundry Facilities
Cyber café

Helideck

In compliance with ICAO Annex – 14 regulations and UK
CAP – 437 Guidelines for S-61 or Equivalent

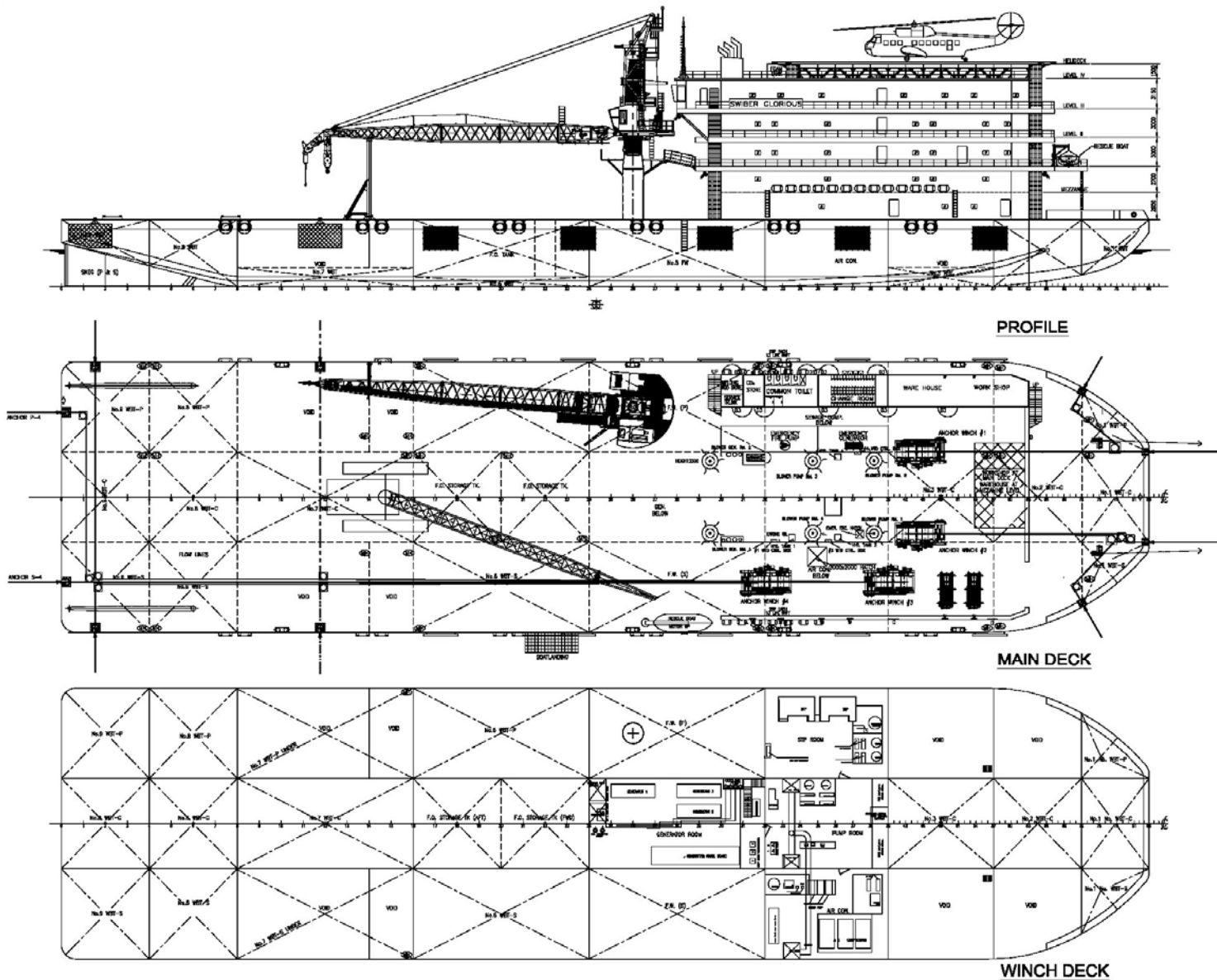
Miscellaneous/ Others

Air Compressors	2 x 750 CFM @ 125 Psi
Sewage Treatment Plant	2 x 200-men capacity
Fresh Water Maker	1 x 75 Tons/day Reverse Osmosis Plant
Incinerator	1 x 18,000liters /day (Compactor x 1 Unit)
Fuel Oil Purifier	1 x 760liter/hr
Oily Water Separator	1 x 2.5m ³ /hr @ 15ppm
Food Waste Disposer	1 x 500kg/hr
Electric Welding Machine	7 x 500AMP, Miller SRH-500
Diesel driven Welding Machine	2 x 600AMP, Miller Big Blue 600

Kreuz Subsea Marine Ltd

12 International Business Park , Cyberhub@IBP #02-02, Singapore 609920

Tel: +65 65050 800 | Fax: +65 65050 801 | Email: marketing@swiber.com | Website: www.swiber.com



Kreuz Subsea Marine Ltd

12 International Business Park , Cyberhub@IBP #02-02, Singapore 609920

Tel: +65 65050 800 | Fax: +65 65050 801 | Email: marketing@swiber.com | Website: www.swiber.com