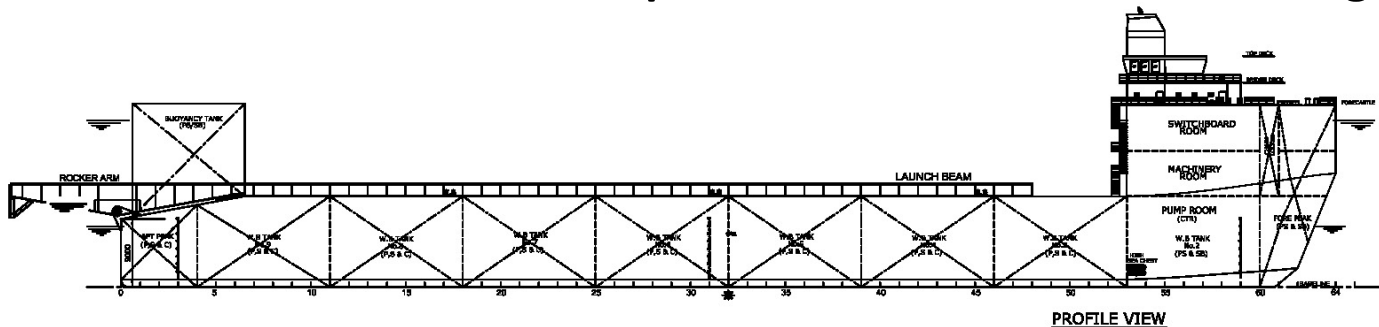


HOLMEN PACIFIC

Submersible Transport, Float-over and Launch Barge



GENERAL SPECIFICATION

General Particulars

Built	2011 (Q4)
Flag	Singapore
Class	BV
Notation	⊗ HULL, MACH Offshore Service Barge Special Service - Launch/ Submersible/ Float Over Unrestricted Navigation

Principal Dimensions

Length Overall	160.00m
Breadth Moulded	40.00m
Depth Moulded	12.00m
Design Draft	8.00m
Draft Float-over	11.00m
Draft Submerged	22.00m
Draft Launch	6.50-7.50m
Displacement at 7m Draft	40,000 Tons
GRT	Approx. 26,000 MT

Deck Capacity

Deadweight	20,000 Tons
Deck Strength	20 MT/m ²
Clear Deck Area	5,300m ²

Machinery

Main Generators	3 x 1,000kW, 415V/3ph/50Hz
Harbour Generator	1 x 120kW, 415V/3ph/50Hz
Ballast Pumps	4 x 4,500m ³ /hr @ 40m head

Deck Equipment

Anchors	3 x 9,900kg
Chain	2 x 330m Grade Q2, dia.87mm
Bridle Chain	2 x 30m stud link grade 3, dia.87mm
Bridle Chain	1 x 20m stud link grade 3, dia.87mm
Intermediate Pennant	1 x 15m, EEIPS 6x37 steel core wire dia.89mm (with hard eye both ends)
Emergency Pennant	1 x 80m, EEIPS 6x37 steel core wire dia.89mm (with hard eye both ends)
Windlass	2 x electric driven for chain dia.87mm (Single gypsy)
Towing Equipment	200T Bollard Pull
2 Buoyancy Tanks	
2 Launching Beams	
2 Rocker Arms	

Newcruz Offshore Marine Pte Ltd

12 International Business Park , Cyberhub@IBP #03-02, Singapore 609920

Tel: +65 65050 800 | Fax: +65 65050 801 | Email: marketing@swiber.com | Website: www.swiber.com

HOLMEN PACIFIC

Submersible Transport, Float-over and Launch Barge

GENERAL SPECIFICATION

Accommodation

Temporary Bridge Accommodation for 10 persons
Comply with relevant SOLAS and Class Rules

Fire Fighting System

Bilge/ Fire Pump 1 x 150m³/hr @ 70m head,
Electric driven, self priming,
centrifugal

Tanks

Ballast Tank
Diesel Oil Tank

Capacity

Approx. 71,000m³
Approx. 200m³

Fire detection and alarm system (1 set)
CO₂ total flooding system (1 set)

GMDSS & Navigation Equipment

PA System	1 set
Radio Comm. System	1 set
Emergency Telephone System	1 set
Echo Sounder	1 set
Magnetic Compass	1 set
EPIRB	1 set
ALDIS Lamp	1 set
Fog Horns/whistles	1 set
GPS	1 set
Inclinometer	1 set
Navtex Receiver	1 set

Life Saving/ Rescue Equipment

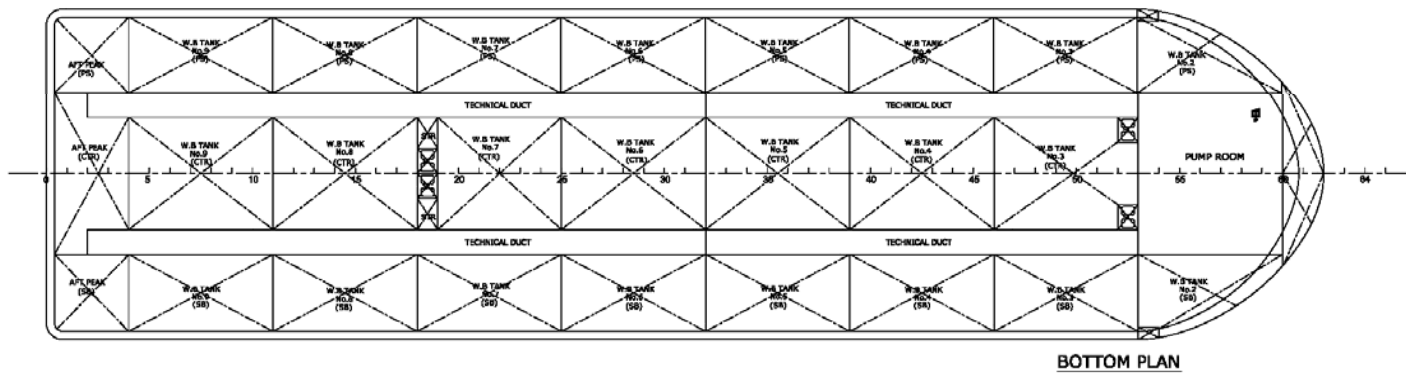
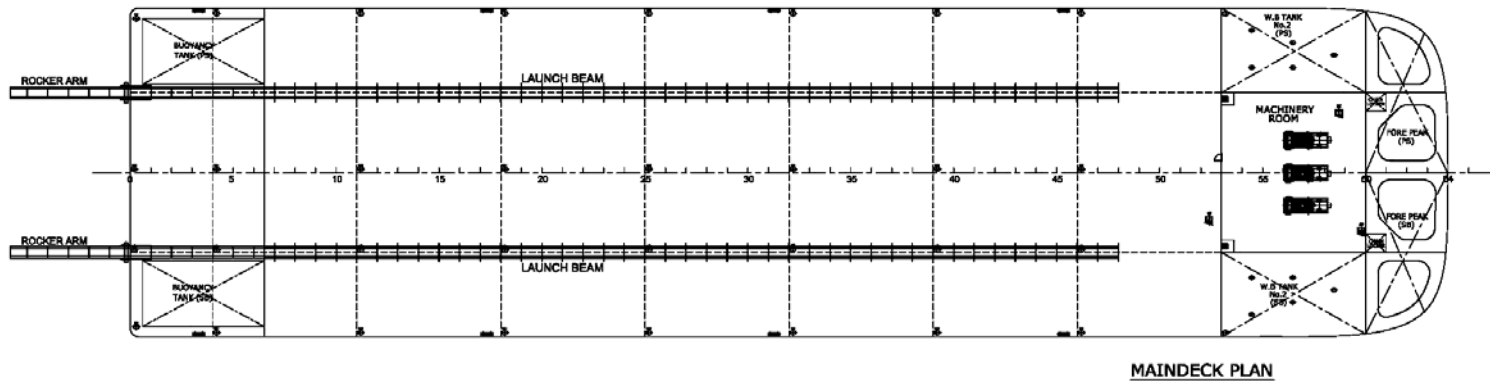
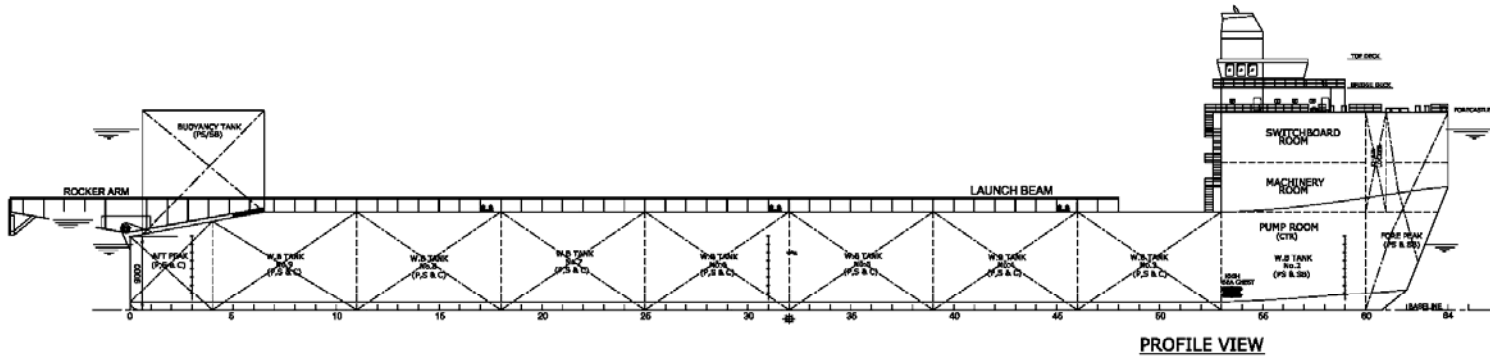
Life-Raft	2 x 25Pax
Life Jacket	50 units
Life Buoy	10 unit

Clocks, bell, shapes provided as per COLREG
Navigation lights fitted as per Rules and Regulations
according to Unrestricted Navigation criteria

Newcruz Offshore Marine Pte Ltd

12 International Business Park , Cyberhub@IBP #03-02, Singapore 609920

Tel: +65 65050 800 | Fax: +65 65050 801 | Email: marketing@swiber.com | Website: www.swiber.com



Newcruz Offshore Marine Pte Ltd

12 International Business Park , Cyberhub@IBP #03-02, Singapore 609920

Tel: +65 65050 800 | Fax: +65 65050 801 | Email: marketing@swiber.com | Website: www.swiber.com