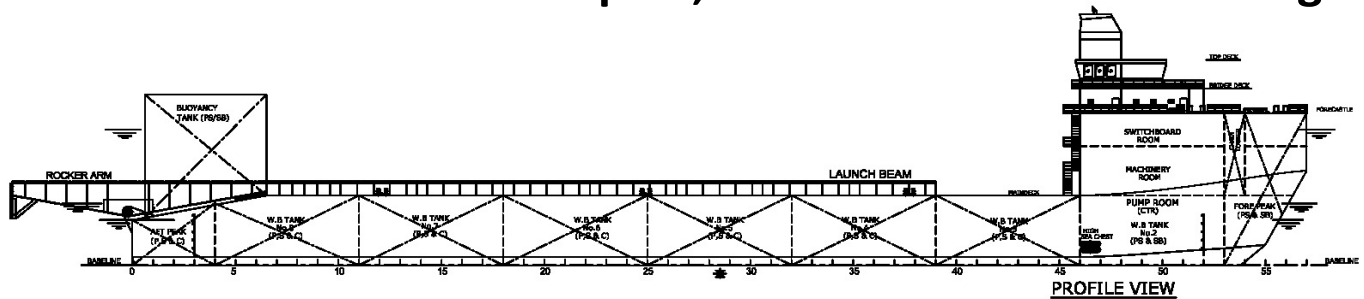


HOLMEN ATLANTIC

Submersible Transport, Float-over and Launch Barge



GENERAL SPECIFICATION

General Particulars

Built	2011 (Q4)
Flag	Singapore
Class	BV
Notation	⊗ HULL, MACH Offshore Service Barge Special Service - Launch/ Submersible/ Float Over Unrestricted Navigation

Principal Dimensions

Length Overall	142.50m
Breadth Moulded	36.00m
Depth Moulded	8.50m
Draft Float-over	7.50m
Draft Submerged	16.50m
Draft Launch	5.00-7.00m
Displacement at 7m Draft	37,000 Tons
GRT	Approx. 13,500 MT

Deck Capacity

Deadweight	17,000 Tons
Deck Strength	20 MT/m ²
Clear Deck Area	Approx. 4,100m ²

Machinery

Main Generators	3 x 750kW, 415V/3ph/50Hz
Harbour Generator	1 x 120kW, 415V/3ph/50Hz
Ballast Pumps	4 x 3,000m ³ /hr @ 40m head

Deck Equipment

Anchors	3 x 6,900kg
Chain	2 x 305m Grade Q2, dia.73mm
Bridle Chain	2 x 30m stud link grade 3, dia.81mm
Bridle Chain	1 x 20m stud link grade 3, dia.81mm
Intermediate Pennant	1 x 15m, EEIPS 6x37 steel core wire dia.79mm (with hard eye both ends)
Emergency Pennant	1 x 80m, EEIPS 6x37 steel core wire dia.79mm (with hard eye both ends)
Windlass	2 x electric driven for chain dia.73mm (Single gypsy)
Towing Equipment	Designed for 200 Tons bollard pull
2 Buoyancy Tanks	
2 Launching Beams	
2 Rocker Arms	

Newcruz Offshore Marine Pte Ltd

12 International Business Park , Cyberhub@IBP #03-02, Singapore 609920

Tel: +65 65050 800 | Fax: +65 65050 801 | Email: marketing@swiber.com | Website: www.swiber.com

HOLMEN ATLANTIC

Submersible Transport, Float-over and Launch Barge

GENERAL SPECIFICATION

Accommodation

Temporary Bridge accommodation for 10 persons comply with relevant SOLAS and Class Rules

Fire Fighting System

Bilge/ Fire Pump 1 x 150m³/hr @ 70m head, electric driven, self priming, centrifugal

Tanks

Ballast Tank
Fuel Oil Tank

Capacity

Approx. 36,000m³
Approx. 180m³

Fire detection and alarm system (1 set)
CO₂ total flooding system (1 set)

GMDSS & Navigation Equipment

PA System	1 set
Radio Comm. System	1 set
Emergency Telephone System	1 set
Echo Sounder	1 set
Magnetic Compass	1 set
EPIRB	1 set
ALDIS Lamp	1 set
Fog Horns/whistles	1 set
GPS	1 set
Inclinometer	1 set
Navtex Receiver	1 set

Life Saving/ Rescue Equipment

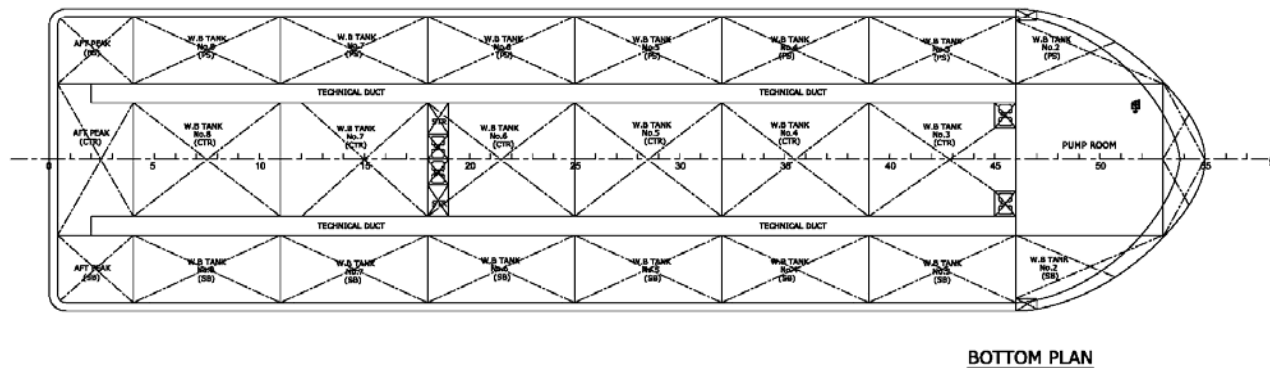
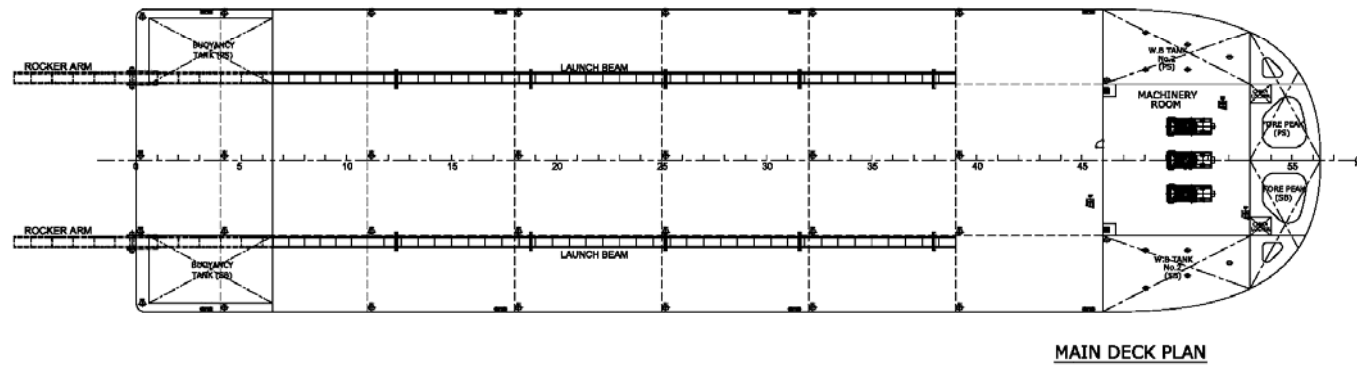
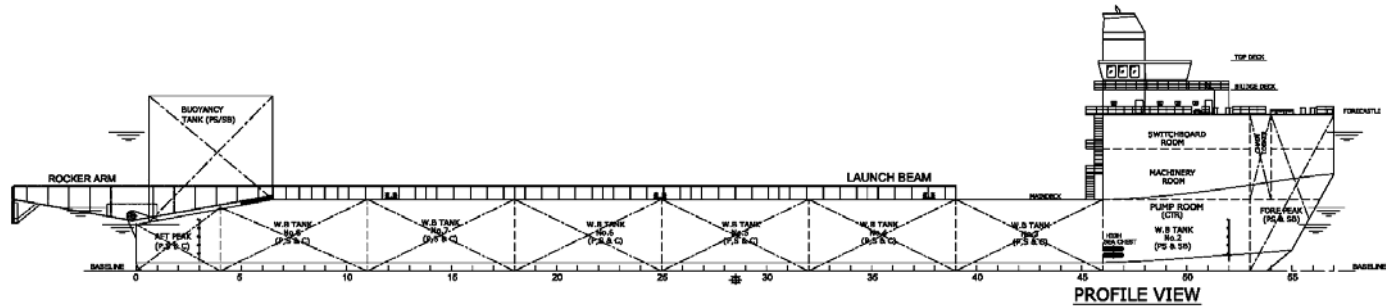
Life-Raft	2 x 25Pax
Life Jacket	50 units
Life Buoy	10 units

Clocks, bell, shapes provided as per COLREG
Navigation lights fitted as per Rules and Regulations according to Unrestricted Navigation criteria

Newcruz Offshore Marine Pte Ltd

12 International Business Park , Cyberhub@IBP #03-02, Singapore 609920

Tel: +65 65050 800 | Fax: +65 65050 801 | Email: marketing@swiber.com | Website: www.swiber.com



Newcruz Offshore Marine Pte Ltd

12 International Business Park , Cyberhub@IBP #03-02, Singapore 609920

Tel: +65 65050 800 | Fax: +65 65050 801 | Email: marketing@swiber.com | Website: www.swiber.com