

Pipe-lay/ Accommodation Work Barge



GENERAL SPECIFICATION

General Particulars

Year Build	2010
Flag	Panama
Class	ABS
Notation	✕ A1 Barge
Description	Accommodation Pipe-lay Barge

Principle Dimensions

Length Overall	366 ft (111.56m)
Breadth Moulded	104 ft (31.70m)
Depth Moulded	14.8 ft (7.31m)
Design Draft	4.50m
GRT / NRT	12,532T / 3,759T

Power Supply

Main Generators	Caterpillar Engine 6 units 3508B, 800kW, 415V/3ph/50Hz @ 1,500rpm
-----------------	---

Crane

BOS-Type Offshore Crane	500MT @ 18m radius, 70T @ 54m Liebherr diesel-hydraulic rope luffing, model BOS 14000-500 D Litronic
Main Hook Rating	500MT @ min. boom radius
Auxiliary Hook Rating	50MT @ min. boom radius

Pipe-Lay Capability

Hydraulic pipe line up station with transverse and longitudinal conveyors

Pipe Outer Dia. Range	4" to 60"
Automatic Tensioners	2 x 60MT nominal pull/SAS
A&R Winch	1 x 120MT
Welding Stations	5 x manual or automatic
NDT	1 x radiography or UT
Coating Preparation	1 x set
Welding Machines	16 x 400amp
Diesel Welding Generators	2 x 600amp
Stinger	1 x 26m x 3m equipped with U & V shape rollers
Rollers Ramp	13 sets of V shape rubber coated rollers
Davits	6 x 30 Tons

Deck Loading Capacity

Clear Deck Area	1,200m ²
Deck Strength	12.5MT/m ²
Deck Sheathing Area	1,100m ²

Auxiliary Equipment

Compressors	Quincy QSI 1000-1014 CFM @ 100 psig Quincy QSI 600 - 630 CFM @ 100 psig
-------------	--

Swiber Offshore Construction Pte Ltd

12 International Business Park , Cyberhub@IBP IBP #04-01/04, Singapore 609920

Tel: +65 65050 800 | Fax: +65 65050 801 | Email: marketing@swiber.com | Website: www.swiber.com

Pipe-lay/ Accommodation Work Barge

GENERAL SPECIFICATION

Anchor and Mooring System

Anchors	8 nos. x 12 Tons delta flipper anchors
Anchor winches	8 single drum hydraulic winches 70MT x 14m/min (first layer)
Mooring lines	8 nos. x 52mm \varnothing x 1,400m
Pendant buoys	10 nos.

Helideck

For S-92 Helicopter

Accommodation

8 x 1 man cabin	8 men
14 x 2 men cabin	28 men
66 x 4 men cabin	<u>264 men</u>
Total	<u>300 men</u>

Tanks

	Capacity
Fuel Oil	900m ³
Portable Water	2,000m ³
Ballast water	7,300m ³
Cooling Water	250m ³
Sewage	50m ³

Service Pumps

Discharge Rates

Centrifugal Ballast pumps	2 x 500m ³ /hr @ 45m head
General Service pump	1 x 100m ³ /hr @ 15m head

Miscellaneous/ Others

Oily Water Separator	1 x 1m ³ /hr c/w 15ppm alarm
Sewage Treatment Plant	Two (2) IMO approved for 300 men
Fresh Water Maker	2 x 50m ³ /day reverse osmosis; STS

Fire Fighting and Survival Equipment

Fire Pump	1 x 150m ³ /hr @110m head; DESMI
Emergency Fire Pump	1 x 50m ³ /hr @ 80m head; DESMI
Life Rafts	24 x 25 men SOLAS 74/78 compliant
Rescue Boat	1 x 6 persons SOLAS approved c/w davit
Water Sprinkler System	main pump (84m ³ /hr capacity, 37kW, 65m head, 1,450rpm); Jockey pump (3m ³ /hr capacity, 1.5kW, 2,896rpm)

GMDSS & Navigation Equipment

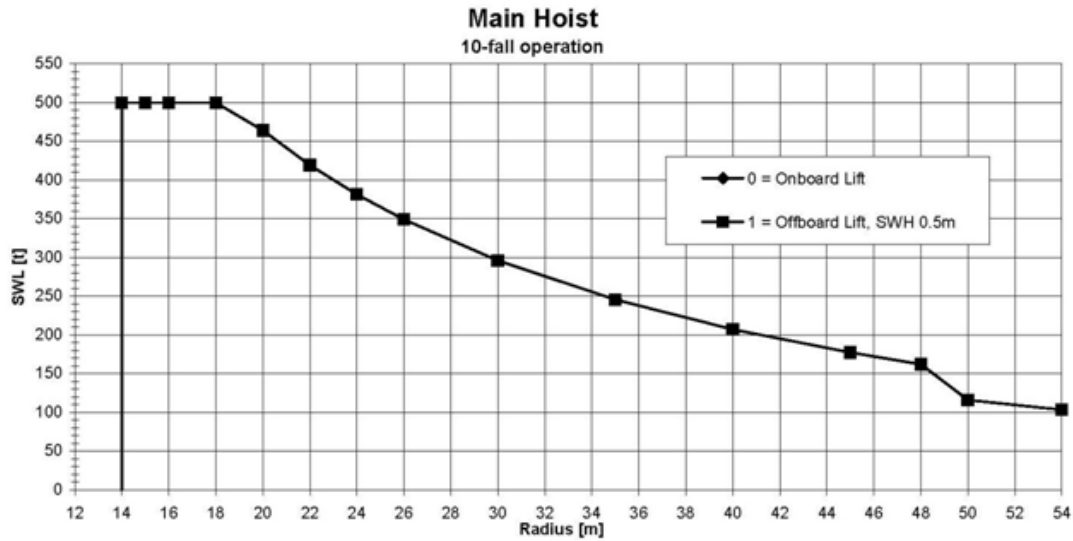
GMDSS	1 x FURUNO FS-1570
Immarsat	1 x FURUNO model FELCOM-16 (LRIT)
VHF Radio	3 x McMurdo model R2
Navtex Receiver	1 x FURUNO NX 700B
SART	2 x MC MURDO S4 9 GHz
EPIRB	1 x MC MURDO E5 SMARTFIND 406 MHz
AIS	1 x FURUNO model FA-150
Portable VHF Radio	6 x ICOM model IC-A210#01
VHF Air Band Transceiver	1 x ICOM IC-A210#01
Marine Radar	1 x FURUNO 1932 MK2
Echo Sounder	1 x FCV-585
GPS	1 x FURUNO GP37
Colour Video Sounder	1 x FURUNO model FCV-585
Satellite Compass	1 x FURUNO SC50
Magnetic Compass	1 x model DAIKO SR-150 PKK
Weather Fax	1 x FURUNO model 408
Anemometer	1 x RM YOUNG model 05103-58 Wind Monitor

Swiber Offshore Construction Pte Ltd

12 International Business Park , Cyberhub@IBP IBP #04-01/04, Singapore 609920

Tel: +65 65050 800 | Fax: +65 65050 801 | Email: marketing@swiber.com | Website: www.swiber.com

Pipe-lay/ Accommodation Work Barge



Angle [°]	Radius [m]	SWL [t]	
		0	1
		Onboard Lift	Offboard Lift SWH 0.5m $v_c = 0.04$
80.5	14.0	500.0	500.0
79.4	15.0	500.0	500.0
78.3	16.0	500.0	500.0
76.1	18.0	500.0	500.0
73.9	20.0	463.9	463.9
71.7	22.0	419.3	419.3
69.4	24.0	381.5	381.5
67.1	26.0	349.0	349.0
62.3	30.0	296.0	296.0
55.9	35.0	245.7	245.7
49.1	40.0	207.4	207.4
41.3	45.0	177.3	177.3
35.9	48.0	162.1	162.1
31.9	50.0	116.0	116.0
21.7	54.0	103.5	103.5

Operational conditions:
max. static inclination: 2.5°
max. constant wind speed: 18 m/s

Swiber Offshore Construction Pte Ltd

12 International Business Park , Cyberhub@IBP IBP #04-01/04, Singapore 609920

Tel: +65 65050 800 | Fax: +65 65050 801 | Email: marketing@swiber.com | Website: www.swiber.com

