

Pipe-lay/ Accommodation Work Barge



GENERAL SPECIFICATION

General Particulars

Year Build	2010
Flag	Malaysia
Class	ABS
Notation	✕ A1 Barge
Description	Accommodation and Work Barge

Principle Dimensions

Length Overall	365.9 ft (111.56m)
Breadth Moulded	104 ft (31.70m)
Depth Moulded	24 ft (7.31m)
Design Draft	14.8 ft (4.50m)
Deadweight	9,530MT
GRT / NRT	12,532T / 3,759T

Power Supply

Main Generator	6 x 800kW @ 1,500rpm CAT 3508B c/w Stamford New Age Alternator PM734C2 rated 800kW/400V/3ph/50Hz
Emergency Generator	1 x 250kW @ 1,500 rpm CAT 3406C c/w Stamford New Age Alternator HCM434F1 rated 250kW/400V/3ph/50Hz

Pipe-lay Capability

Pipe Outer Diameter	4" to 60"
Maximum Pipe Joint Weight (Per LCO)	17.5T
Pipe Length	40 ± 2.5 feet
Pipe Tensioner	2 x 60MT @ approx. 25m/min SAS model TEN60H
A & R Winch	1 x 120MT @ approx. 25m/min SAS model WIN120AR
Welding Stations	5 x manual or automatic
Welding Machines	16 x 400amp & 2 x 600amp welding machines
NDT Station	1 x radiography or UT
Coating Station	1 set
Stinger	1 x fixed Stinger 32m fitted with 4 x V-type & 1 x U-type rollers
Hydraulic Winches	1 x 15MT single drum hydraulic "A-Frame" winch, model ME15THAFW line pull 15MT x 17m/min
Davit	6 x 30MT davits on portside

Deck Area & Loading

Clear Deck Area	1,200m ²
Deck Load	12.5T/m ²

Swiber Offshore Construction Pte Ltd

12 International Business Park , Cyberhub@IBP #04-01/04, Singapore 609920

Tel: +65 65050 800 | Fax: +65 65050 801 | Email: marketing@swiber.com | Website: www.swiber.com

Pipe-lay/ Accommodation Work Barge

GENERAL SPECIFICATION

Deck Crane

1 x 300MT	Huisman pedestal-mounted offshore crane c/w 46m jib and fly jib
Main Hoist	
Static Load Capacity	300MT/ 9 falls @ 10m radius 76MT/ 9 falls @ 44m radius
Dynamic Load Capacity	240MT/ 9 falls @ 12m radius 48MT/ 9 falls @ 44m radius
Auxiliary Hoist	30MT single line at all radius

Accommodation

8 x 1 man cabin	8 men
14 x 2 men cabin	28 men
66 x 4 men cabin	<u>264 men</u>
Total	<u>300 men</u>

All cabins fully air-conditioned, comply with ILO 92, IMO Resolution A468 (XII)

Anchor and Mooring System

Anchors	8 nos. x 12 Tons delta flipper anchors
Anchor Wire	8 x 1,400m (L) x 52mm \varnothing SWR
Pendant Buoys Length	10 nos. x 1.83m \varnothing x 2.45m
8 Point Mooring	8 single drums, electro-hydraulic, Mentrade
Winches	8 instrument sheaves, 8 deflector sheaves & 8 universal fairleads
Drum	Suitable for 1,400 m (L) x 52mm \varnothing SWR
Drum Pull (1 st layer)	85MT @0-12m/min(1 st speed) 50MT @0-19m/min(2 nd speed) 28MT @0-32m/min(3 rd speed) 15MT @0-46m/min(4 th speed)
Drum Brake (1 st layer)	180MT (Static)
Drag Brake (1 st layer)	9MT x 0-120m/min

Deck Equipment

Tugger winch	1 x 10 Tons electro-hydraulic
--------------	-------------------------------

Helideck

For S-92 or Mi8 helicopter

Tanks

	Capacity	Discharge Rates
Fuel Oil	884m ³	1 x 120m ³ /hr @ 60m head; ITUR
Portable Water	2,037m ³	2 x 25m ³ /hr @ 40m head
Cooling Water	1,020m ³	1 x 120m ³ /hr @ 60m head; DESMI
Sewage	52m ³	1 x 15m ³ /hr @ 20m head; INOX
Ballast Water	7,325m ³	2 x 500m ³ /hr @ 45m head; AZCUE

Service Pumps

	Discharge Rates
Centrifugal Ballast Pumps	2 x 500m ³ /hr @ 45m head; AZCUE
Fire Fighting Pump	1 x 150m ³ /hr @ 110m head; DESMI
General Service Pump	1 x 100m ³ /hr @ 60m head; DESMI
Bilge System	1 x 100m ³ /hr @ 50m head; DESMI

Swiber Offshore Construction Pte Ltd

12 International Business Park , Cyberhub@IBP #04-01/04, Singapore 609920

Tel: +65 65050 800 | Fax: +65 65050 801 | Email: marketing@swiber.com | Website: www.swiber.com

Pipe-lay/ Accommodation Work Barge

GENERAL SPECIFICATION

Fire Fighting and Survival Equipment

Fire Pump	1 x 150m ³ /hr @ 110m head; DESMI
Emergency Fire Pump	1 x 50m ³ /hr @ 80m head; DESMI
Life Rafts	24 x 25 men SOLAS 74/78 compliant
Rescue Boat	1 x 6 persons SOLAS approved c/w davit

Miscellaneous/ Others

Oily Water Separator	1 x 1m ³ /hr c/w 15ppm alarm
Sewage Treatment Plants	Two (2) IMO approved for 300 men
Fresh Water Makers	2 x 50m ³ /day reverse osmosis; STS

GMDSS & Navigation Equipment

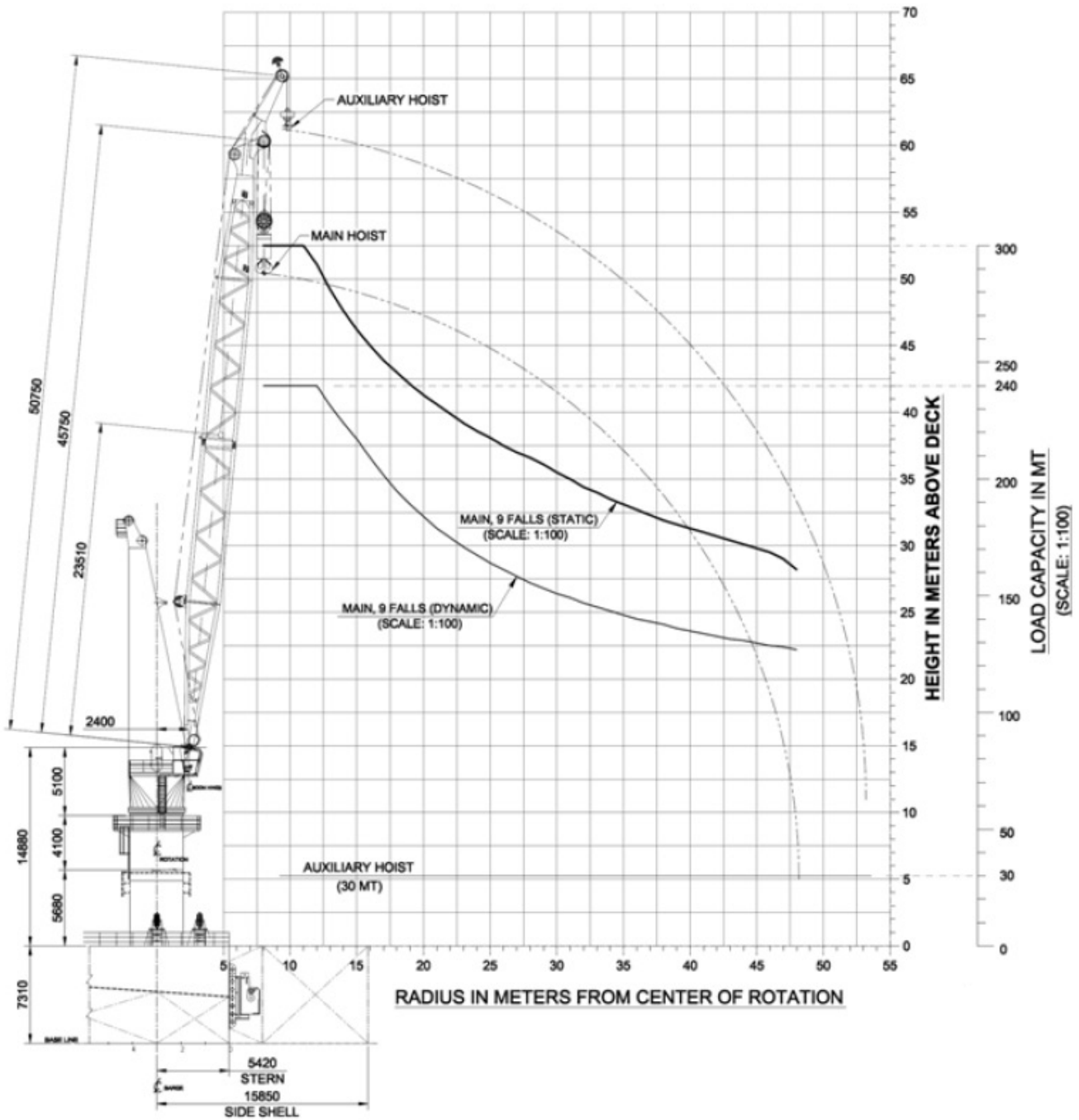
GMDSS	1 x FURUNO FS-1570
Immarsat	1 x FURUNO model FELCOM-16 (LRIT)
VHF Radio	3 x McMurdo model R2
Navtex Receiver	1 x FURUNO NX 700B
SART	2 x MC MURDO S4 9 GHz
EPIRB	1 x MC MURDO E5 SMARTFIND 406 MHz
AIS	1 x FURUNO model FA-150
Portable VHF Radio	6 x ICOM model IC-A210#01
VHF Air Band Transceiver	1 x ICOM IC-A210#01
Marine Radar	1 x FURUNO 1932 MK2
Echo Sounder	1 x FCV-585
GPS	1 x FURUNO GP37
Colour Video Sounder	1 x FURUNO model FCV-585
Satellite Compass	1 x FURUNO SC50
Magnetic Compass	1 x model DAIKO SR-150 PKK
Weather Fax	1 x FURUNO model 408
Anemometer	1 x RM YOUNG model 05103-58 Wind Monitor

Swiber Offshore Construction Pte Ltd

12 International Business Park , Cyberhub@IBP #04-01/04, Singapore 609920

Tel: +65 65050 800 | Fax: +65 65050 801 | Email: marketing@swiber.com | Website: www.swiber.com

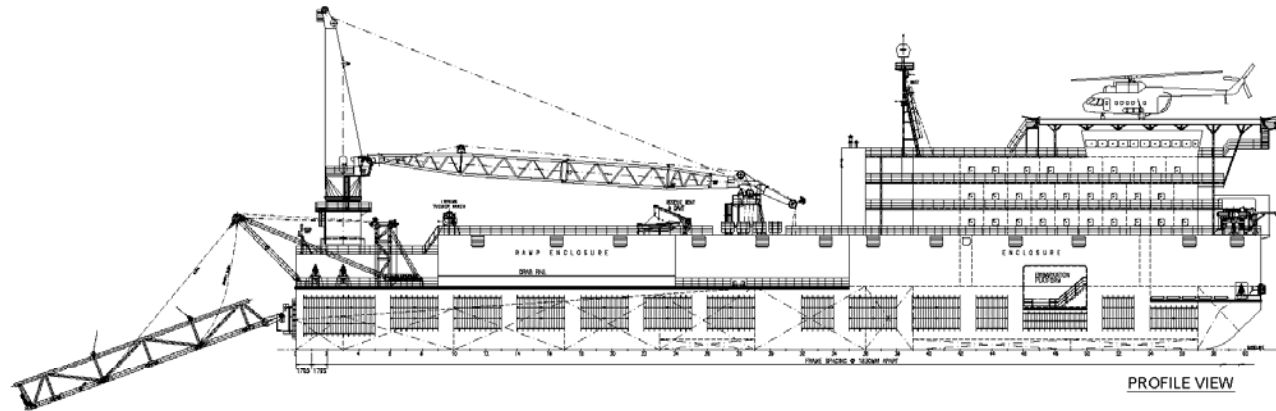
Pipe-lay/ Accommodation Work Barge



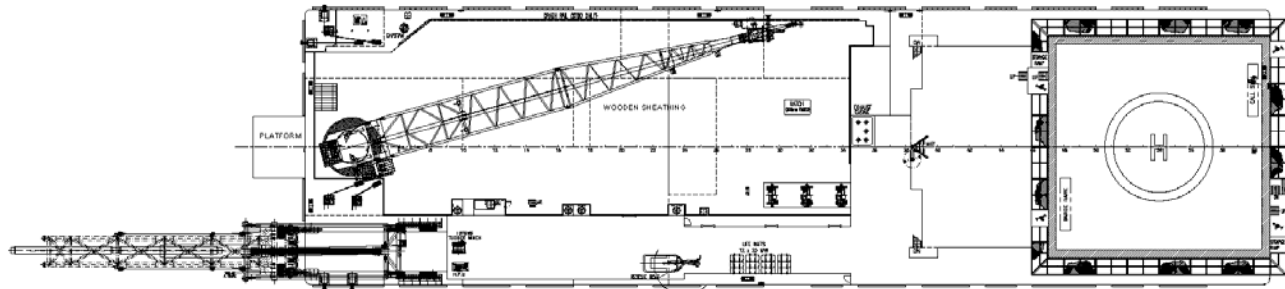
Swiber Offshore Construction Pte Ltd

12 International Business Park , Cyberhub@IBP #04-01/04, Singapore 609920

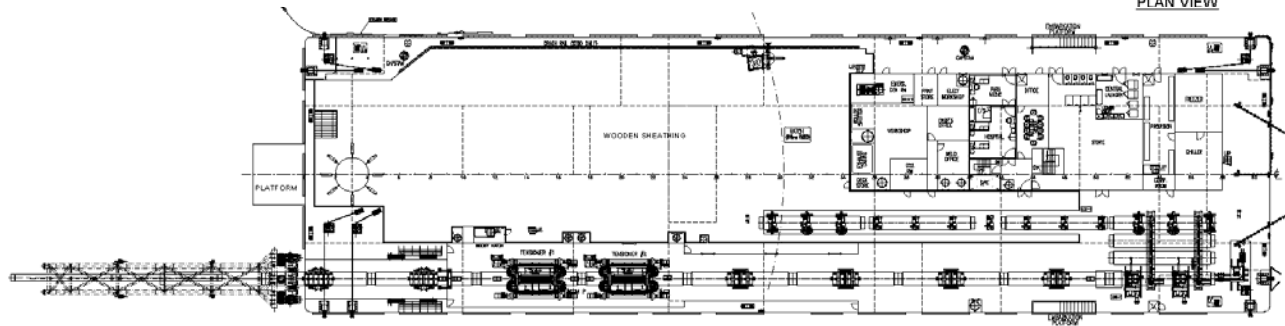
Tel: +65 65050 800 | Fax: +65 65050 801 | Email: marketing@swiber.com | Website: www.swiber.com



PROFILE VIEW



PLAN VIEW



MAIN DECK PLAN