

Swiber SLB-1

Submersible Launch Barge



GENERAL SPECIFICATION

General Particulars

Built	2007
Flag	Singapore
Class	BV
Notation	I*HULL Offshore Service Submersible /Jacket Transportation Launch Barge
Gross Tonnage	10850
Net Tonnage	3255

Principle Dimensions

Length Overall	140m
Beam	36.6m
Depth Moulded	7.62m
Maximum Draught	5.448m

Deck Loading Capacity

Deck Loading Capacity	20 Tons/m ²
-----------------------	------------------------

Transportation & Launch Capabilities

Designed for Rocker arms	L = 24m
Jacket Weight	8500 Tons

Machinery

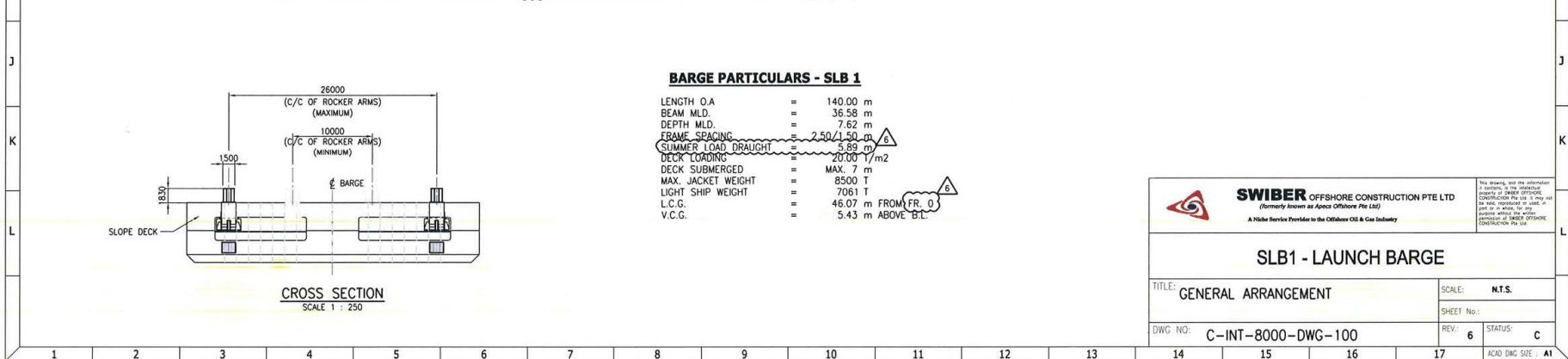
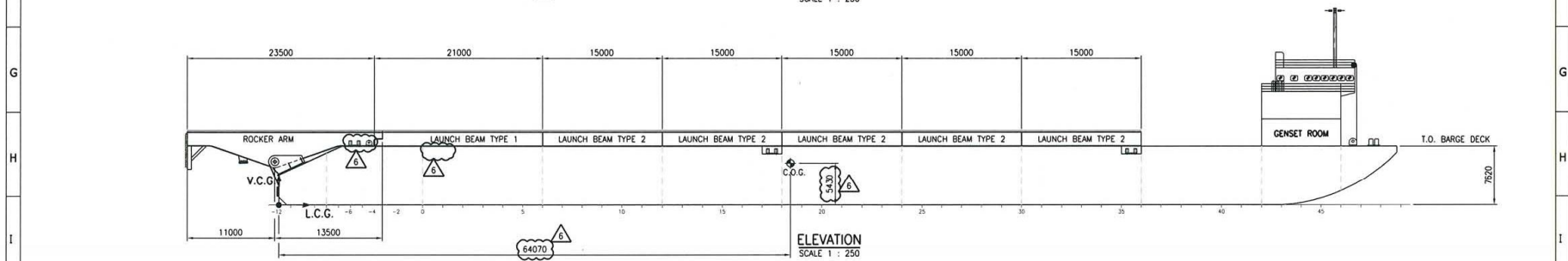
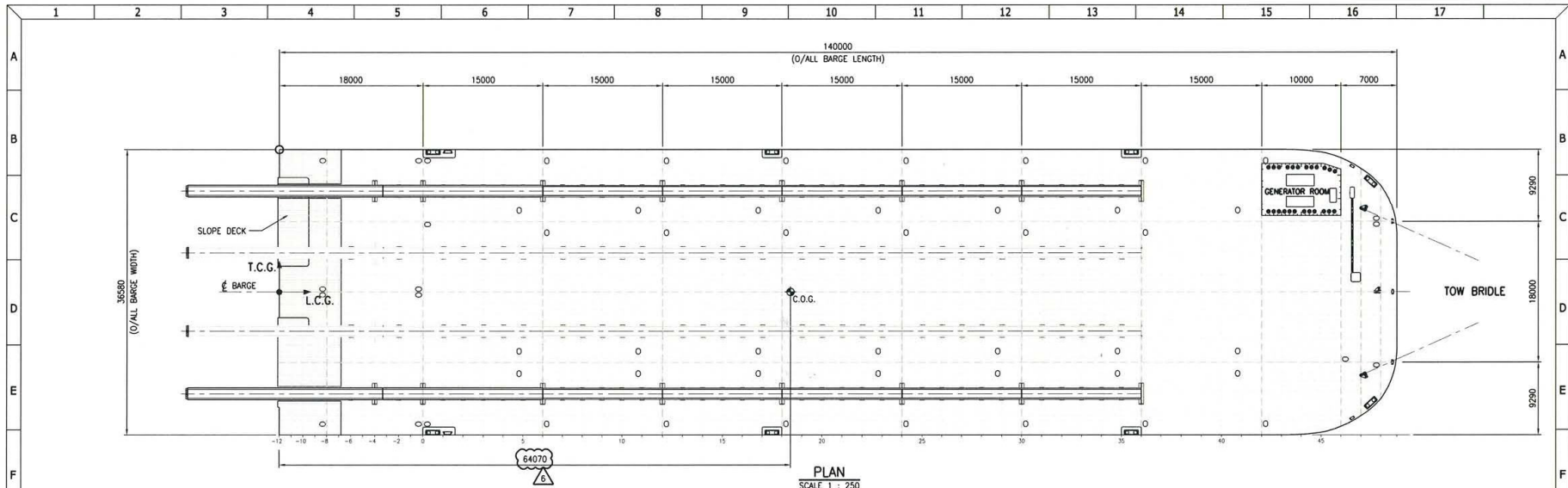
Generator	2 x 420 kW generator, 415V / 3pH / 50Hz
Pumps	2 x 1000m ³ /hr ballast pump @25m Head with vac stripping/priming system
Decks	Storm winch of 20T capacity. Windlass with drum end.
Anchor & SWR	Anchor & Dia. 44mm SWR
Note:	Load out equipment and jacket launch winches available on demand

Kreuz Offshore Marine Pte Ltd

12 International Business Park , Cyberhub@IBP #03-02, Singapore 609920

Tel: +65 65050 600 | Fax: +65 65050 601 | Email: marketing@kreuzinternational.com | Website: www.kreuzinternational.com

P:\DRAWINGS\PROJECTS\INT-8000\SLB1\LAUNCH\LAUNCH\COMPLETED\DWG\C-INT-8000-DWG-100.dwg, 16/02/2016 10:33:37 AM, 44444444



BARGE PARTICULARS - SLB 1

LENGTH O.A.	=	140.00 m
BEAM MLD.	=	36.58 m
DEPTH MLD.	=	7.62 m
FRAME SPACING	=	2500 mm
SUMMER LOAD DRAUGHT	=	5.89 m
DECK LOADING	=	20.00 T/m ²
DECK SUBMERGED	=	MAX. 7 m
MAX. JACKET WEIGHT	=	8500 T
LIGHT SHIP WEIGHT	=	7061 T
L.C.G.	=	46.07 m FROM FR. 0
V.C.G.	=	5.43 m ABOVE B.L.

<p>SWIBER OFFSHORE CONSTRUCTION PTE LTD (formerly known as Apco Offshore Pte Ltd) A Niche Service Provider to the Offshore Oil & Gas Industry</p>		<small>This drawing and the information it contains, is the intellectual property of SWIBER OFFSHORE CONSTRUCTION PTE LTD. It is not to be used, copied, or reproduced in any form without the written permission of SWIBER OFFSHORE CONSTRUCTION PTE LTD.</small>	
		<p>SLB1 - LAUNCH BARGE</p>	
<p>TITLE: GENERAL ARRANGEMENT</p>		<p>SCALE: N.T.S.</p>	
<p>DWG NO: C-INT-8000-DWG-100</p>		<p>SHEET No.: 6 REV: 6 STATUS: C</p>	
		<p>ACAD DWG SIZE: A1</p>	

