



SWIBER SUPPORTER Accommodation Work Barge

GENERAL SPECIFICATION

General Particulars

Year Build	2008
Flag / Port of Registry	Panama
Class	ABS
Notation	⊗A1 Work Barge

Principles Dimensions

Length Overall	100.6m
Breadth Overall	27.4m
Depth Molded	6.1m
Draft	1.8m
GRT / NRT	TBA

General Description

The barge is a general purpose work barge with accommodation facilities for 150men. The barge is fitted with an eight point mooring system with 250T crawler crane.

Power Supply

Main Generator	3 x 700kVA, 500hp
Emergency Generator	1 x 200kVA

Mooring Equipment

- Single Drum x 4 Nos. Line pull of 35T (first layer)
- Brake holding capacity of 55T
- Drum Capacity: 45Ton winch: 1000m x 42mm dia
35Ton winch: 800m x 38mm dia
- Rated pull: 45 Ton x 10m/min; 35 Ton x 10m/min
- Fitted with One 10T anchor.

Crane

Crawler Crane Revolving	MANITOWOC 777
Lifting Capacity	200MT
Boom Length	67m (with 9m jib boom)

Deck Area

Clear Working Area	1,690m ²
Deck Loading Capacity	15 Tons/m ²

Accommodation

Complement	146 men
One Man Cabin	2 nos. (2 men)
Two Men Cabin	8 nos. (16 men)
Four Men Cabin	32 nos. (128 men)

Equipment

Air Compressors	Atlas Copco GA30 ⁺ -10, Working pressure: 216 psi
-----------------	---

Radio Communication

- Tel/Fax/Data/e-mail VSAT satellite system
- 9 x 25w VHF Base stations
- 8 x 4w portable VHF
- Radar
- Weather Fax
- SSB Radio
- Aero VHF

Fire Fighting and Safety Equipment

- Life Raft (Inflatable): 25men x 12nos.
- Life Jackets
- Life Ring Buoys
- Main overboard signals
- Rescue Boat
- General Alarm
- Detector, Fire Extinguishers, Fixed CO2 etc. available on entire barge as per SOLAS

Service Pumps and Tanks

- 2 x 110m3/hr submersible sea water cooling pump
- 2 x 10m3/hr submersible fresh water pump
- 2 x 75m3/hr submersible fire water pump
- 1 x 1600l/min submersible sprinkle pump
- 2 x 450 m3 Fresh Water Tanks
- 2 x 450 m3 Fuel Oil Tanks

Sewage Treatment

One (1) IMO approved Sewage Treatment plant for 150men (min.)

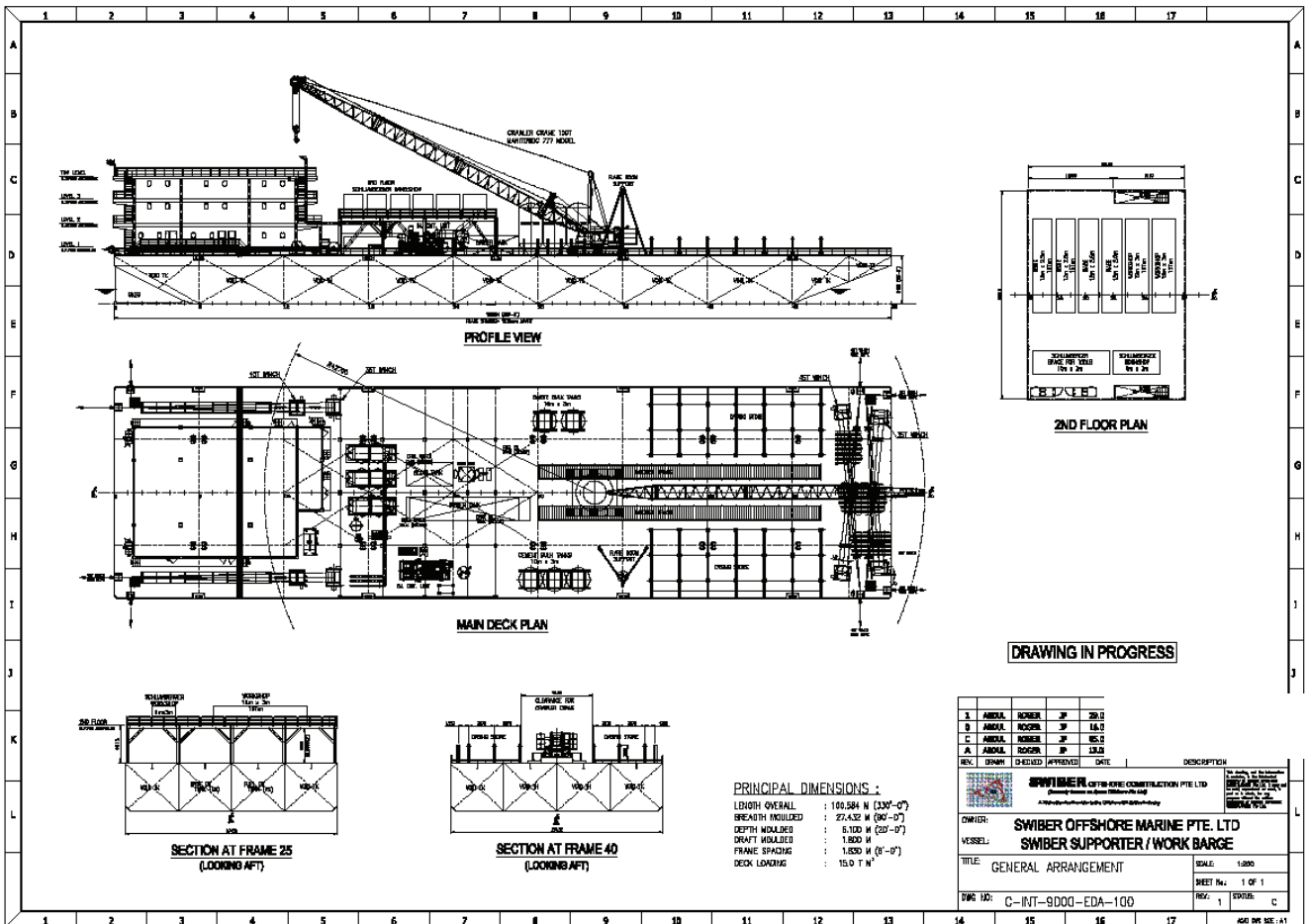
Freshwater Maker

Reverse Osmosis Plant 1 x 64,000 Liters/day

Accommodation Facilities

- Client Offices
- Client Recreation Room
- Conference Room
- Hospital
- Prayer Room
- TV / Video Room
- Gymnasium
- Galley & Laundry Facilities

SWIBER SUPPORTER



Swiber Offshore Marine Pte Ltd

12 International Business Park , Cyberhub@IBP #04-01/04, Singapore 609920

Tel: +65 65050 800 | Fax: +65 65050 801 | Email: marketing@swiber.com | Website: www.swiber.com