



SWIBER MAGNIFICENT 4200T Derrick Lay Barge

(Under Construction)

GENERAL SPECIFICATION

General Information

Year Build	05/2010
Flag / Port of Registry	Singapore / Panama
Class	BV
Notation	Hull/Mach Offshore Service Barge - Pipelaying - Lifting - Accommodation +ALM / +HEL / +POSA

Main Particulars

Length Overall	156m
Breadth Overall	50m
Depth Moulded	12m
Design Draft	8m
Displacement	53,600MT

Derrick Crane

Amclyde Model 80	
Main Hook (Special Revolving)	3,800MT @ 30m
Main Hook (Special Revolving)	3,000MT @ 40m
Main Hook (Fully Revolving)	3,100MT @ 30m
Main Hook (Fully Revolving)	2,750MT @ 40m
Aux. Hook	800MT
Whip Hook	200MT

Pipe Laying - Tensioning Units

- 3 x 80T Automatic Tensioners
- 1 No. A&R winch 240T
- 8" – 60" coated pipe OD range

Pipe Laying - Handling Equipment

- Hydraulic pipe line up station with transverse and longitudinal conveyors
- 6 x Welding Stations – Manual or Automatic
- 2 x NDT / Repair Stations – Radiography or U.T.
- 3 x Coating / Surface Preparation Stations
- 16 x 400 amp Welding Machines
- 2 x 600 amp Diesel Welding Generators
- Stinger 70m equipped with V shape rollers

Deck Area & Loading

Timber Deck Sheating Area	3,800m ²
Sheltered Work Area	1,300m ²
Deck Loading Capacity	10,000MT
Deck Strength	12MT/m ²

Deck Facilities

- Mechanical & Electrical workshops
- Warehouses, Paint Store

Accommodations

Complement	320 men
"B" Deck level :	
• 54 nos x 4 men cabins	
"C" Deck Level :	
• 4 nos x 1 man suite	
• 4 nos x 1 man cabins	
• 22 nos x 2 man cabins	
• 13 nos x 4 man cabins	

Helideck

Helideck D value = 22m	For S61N Helicopter
------------------------	---------------------

Power Supply

Main Generator	6 x 2,400kW
Emergency Generator	500kW

Mooring Equipment

- 12 Single drum electric VFD winches, 130MT line pull
- Local & Remote controls c/w load cells & line read-out
- 12 Mooring lines, 2"1/4, unit length 1500m
- 12 Flipper DELTA Anchors – 15 Tons each

Ballast Pumps

Ballast System	2 x 3,000 m ³ /hr
Fast Ballast System (Heeling)	4 x 3,000 m ³ /hr

Auxiliary Cranes

Pedestal Crane	1 x 20MT
Crawler Crane	1 x 250MT

Fire Fighting and Life Saving Systems

According to SOLAS 1974, and 1981 & 1983 amendments

- General alarm system
- Fire detection & alarm system
- Sprinkler system
- CO2 Flooding system
- Form monitors for helideck
- Life jackets, life rafts

Radio Communication

- Tel/Fax/Data/e-mail VSAT satellite system
- VHF Base stations + Portable VHF + Aero VHF
- PA system
- Intercom
- Weather Fax
- SSB Radio

Accommodation Facilities

- Client Offices
- Client Recreation Room
- Conference Rooms
- Hospital
- Prayer Room
- TV / Video Rooms
- Internet Room
- Gymnasium
- Galley & Laundry Facilities

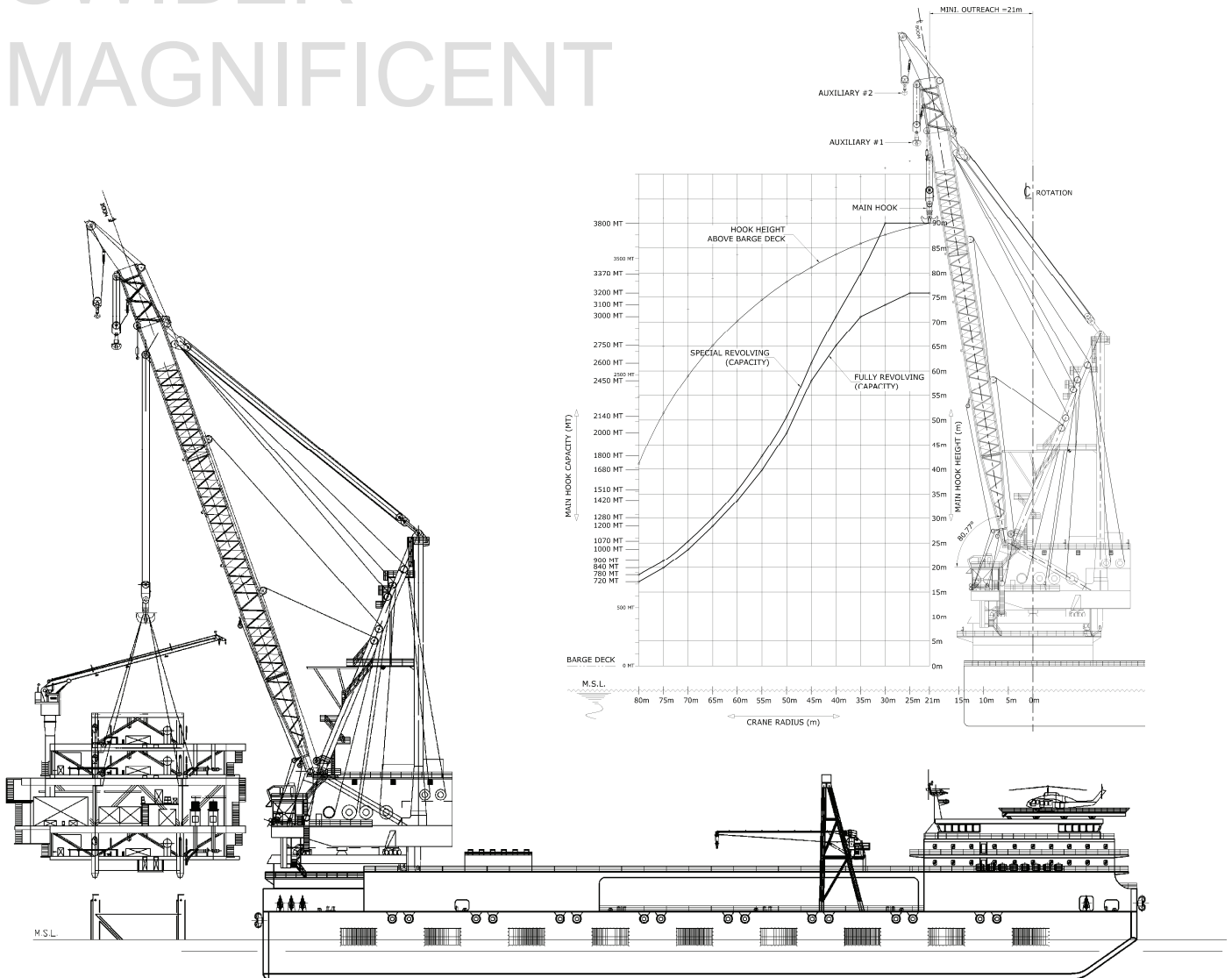
Freshwater Maker

R.O. Plant 2 nos. 50TPD each, total 100TPD

Sewage Treatment

IMO approved Sewage Treatment Plant for 320 men

SWIBER MAGNIFICENT



Swiber Offshore Construction Pte Ltd

12 International Business Park, Cyberhub@IBP #04-01/04, Singapore 609920

Tel: +65 65050 800 | Fax: +65 65050 801 | Email: marketing@swiber.com | Website: www.swiber.com