



SWIBER 282

Flat Top Cargo Barge

GENERAL SPECIFICATION

General Particulars

Year Built	2007
Flag	Singapore
Class	GL
Notation	✕ 100 A5, Pontoon

Principal Dimensions

Length Overall	280 ft (85.34m)
Breadth Overall	80 ft (24.38m)
Depth Moulded	16 ft (4.88m)
Draft	3.77m
GRT/NRT	2572 / 772 Tons
Deck Loading	20 Tons/m ²

Deck Fittings

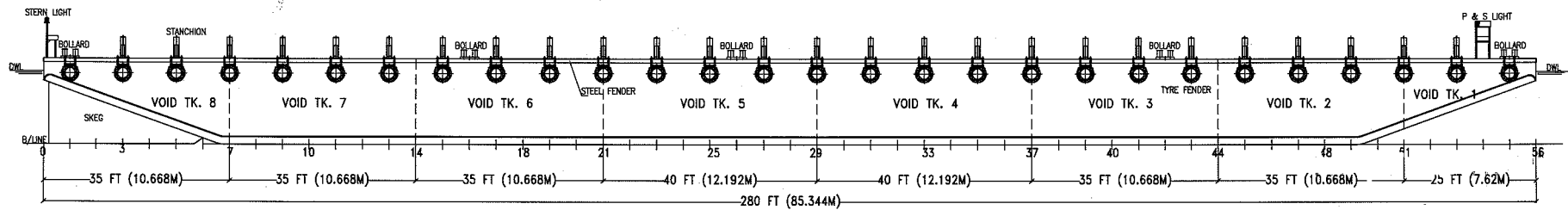
Anchor Winch	1 x 10T Hand-Operated Anchor Winch
Anchor	1 x 1000kg stockless anchor
Towing Bracket with Fairlead	2 pcs Towing Pad at forward deck
Mooring Bollards	10 x 10" Sch 80
Deck Stanchions	52 pcs

Above information presented are correct but not guaranteed

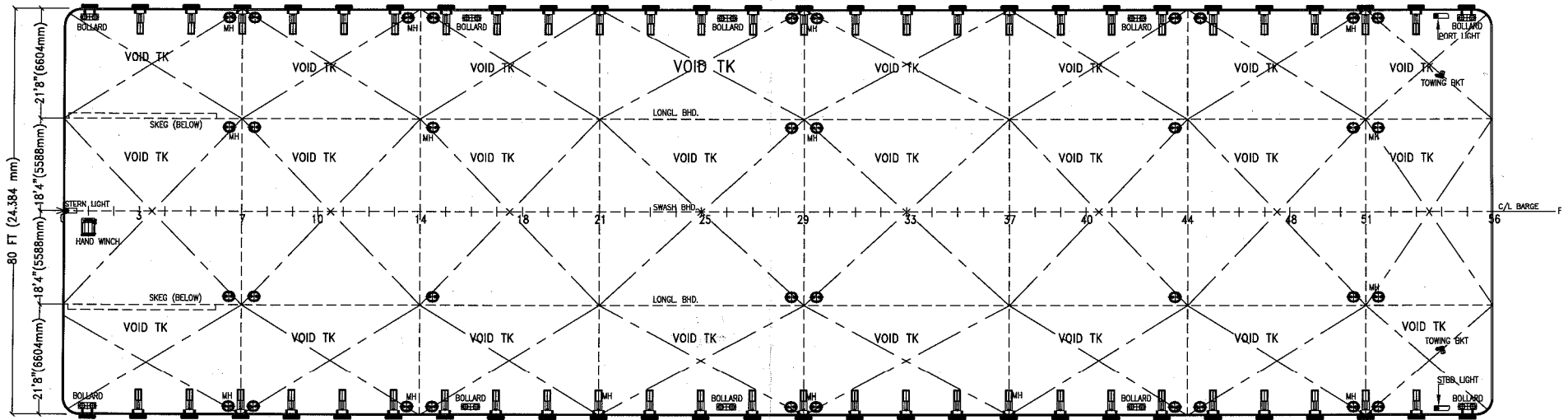
Kreuz Offshore Marine Pte Ltd

12 International Business Park , Cyberhub@IBP #03-02, Singapore 609920

Tel: +65 65050 600 | Fax: +65 65050 601 | Email: marketing@kreuzinternational.com | Website: www.kreuzinternational.com



PROFILE



MAIN DECK PLAN

PRINCIPAL DIMENSIONS

LENGTH OVERALL	—————	280'0" (85.344M)
BREADTH MOULDED	—————	80'0" (24.384M)
DEPTH MOULDED	—————	16'0" (4.877M)
DESIGN DRAFT	—————	4.145 M
DECK LOADING	—————	20 TONNES/M2
OWNER	—————	SWIBER MARINE
CLASS	—————	GERMANISCHER LLOYD (GL)