



SWIBER 253

Flat Top Cargo Barge

GENERAL SPECIFICATION

General Particulars

Year Built	2006
Flag	Singapore
Class	BV
Notation	I ✕ HULL, Pontoon Unrestricted navigation

Principal Dimensions

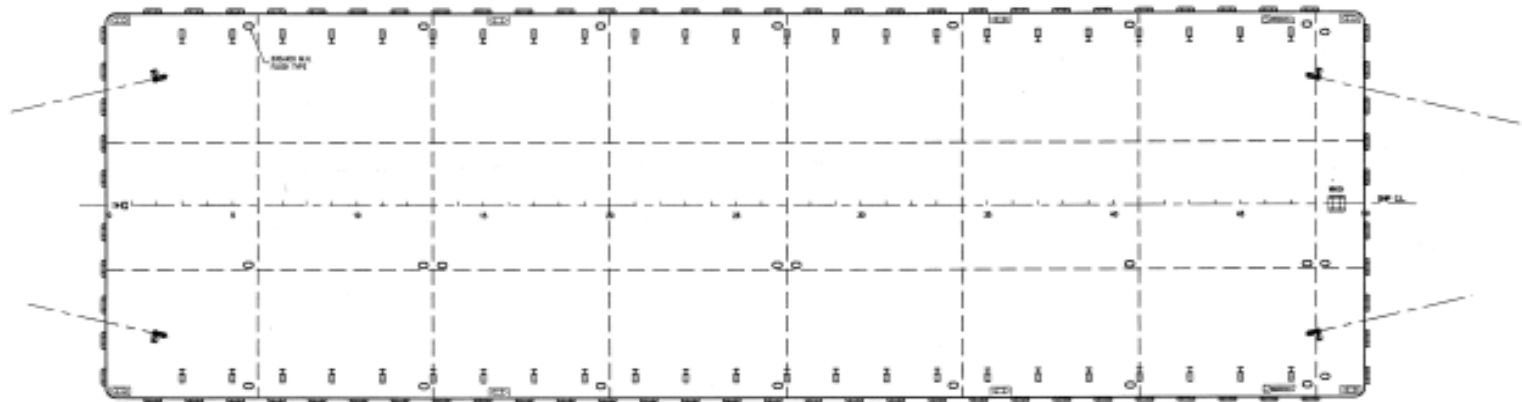
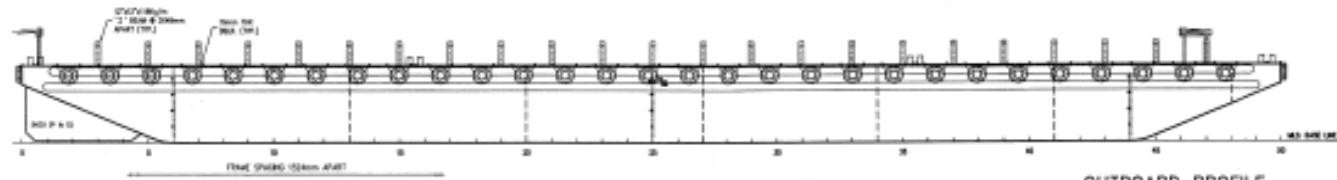
Length	240 ft (73.15m)
Breadth	80 ft (24.38m)
Depth Moulded	16ft (4.88m)
GRT / NRT	2306 / 692 Tons
Deck Strength	15 Tons/m ²

Above information presented are correct but not guaranteed

Kreuz Offshore Marine Pte Ltd

12 International Business Park , Cyberhub@IBP #03-02, Singapore 609920

Tel: +65 65050 600 | Fax: +65 65050 601 | Email: marketing@kreuzinternational.com | Website: www.kreuzinternational.com



PRINCIPAL DIMENSIONS

LENGTH OVERALL	76.200 M (250'-0")
BREADTH MOULDED	24.384 M (80'-0")
DEPTH MOULDED	4.880 M (16'-0")
DRAFT MOULDED	3.800 M (12'-6")
DECK LOADING	15 MT/M ²