



SWIBER 252

Flat Top Cargo Barge (Ballastable)

GENERAL SPECIFICATION

General Particulars

Year Built	2005
Flag	Singapore
Class	BV
Notation	I ✕ HULL, Pontoon Unrestricted navigation

Principal Dimensions

Length Overall	250 ft (73.15m)
Breadth Overall	80 ft (24.38m)
Depth Moulded	16 ft (4.88m)
Draft	4.88m
GRT/NRT	2306 / 692 Tons
Deadweight	5500 Tons
Deck Loading capacity	15 Tons/m ²

Deck Fittings

Anchor	1 x 1200kg stockless anchor
Anchor Winch	1 x 10 Ton Hand Winch
Towing Bracket with Fairlead	SMIT Towing Bracket Fwd & Aft
Bollards	8 x double bitt bollards (4 Port/4 Stbd)

Cargo Stanchions

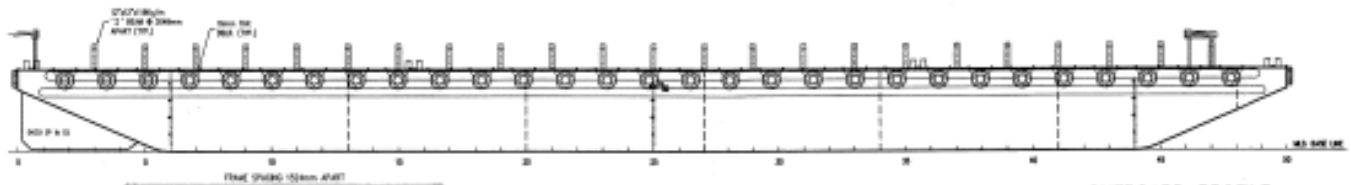
Cargo Stanchions	46 nos. x 24" x 12" x 118kg/m "I" Beam
------------------	--

Above information presented are correct but not guaranteed

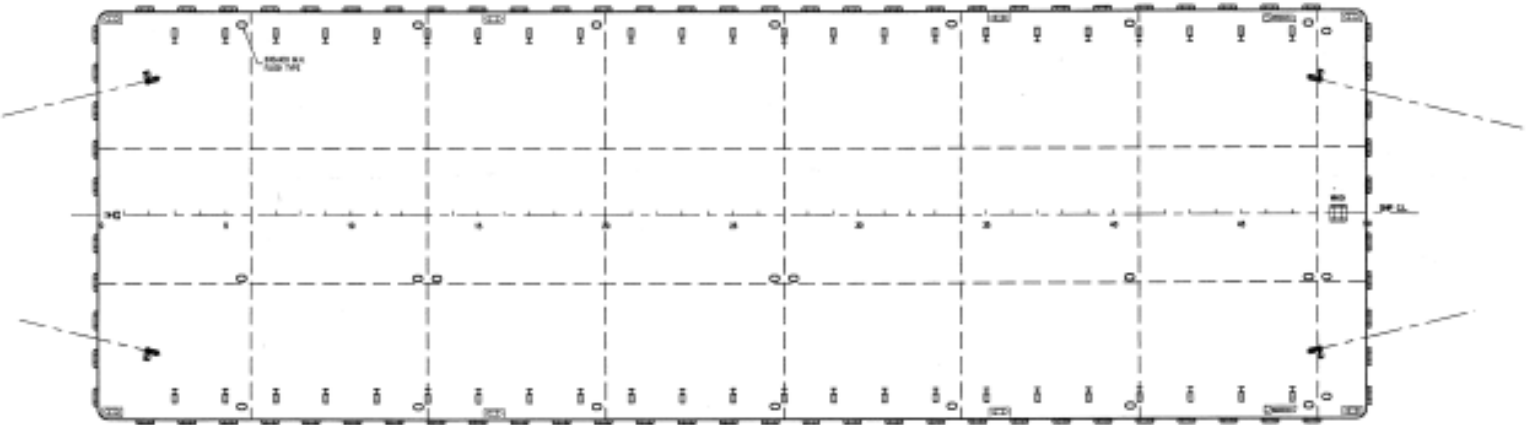
Kreuz Offshore Marine Pte Ltd

12 International Business Park , Cyberhub@IBP #03-02, Singapore 609920

Tel: +65 65050 600 | Fax: +65 65050 601 | Email: marketing@kreuzinternational.com | Website: www.kreuzinternational.com



OUTBOARD PROFILE



MAIN DECK PLAN

PRINCIPAL DIMENSIONS

LENGTH OVERALL	76.200 M (250'-0")
BREADTH MOULDED	24.384 M (80'-0")
DEPTH MOULDED	4.880 M (16'-0")
DRAFT MOULDED	3.800 M (12'-6")
DECK LOADING	15 MT/M ²