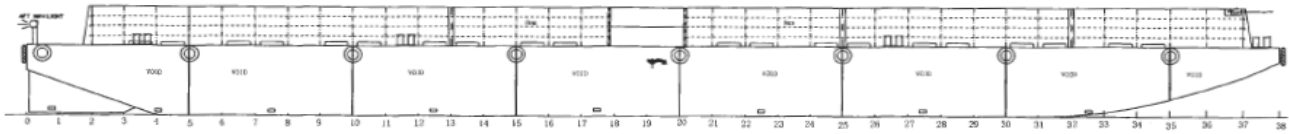
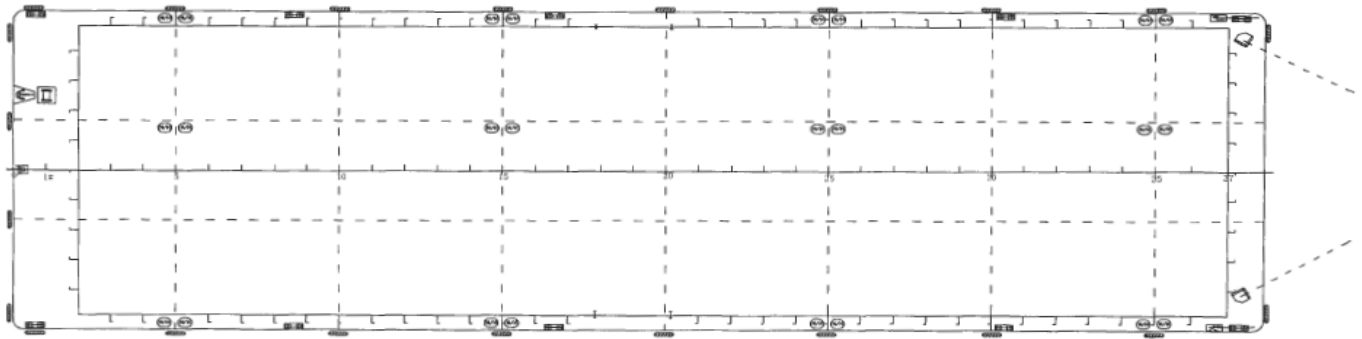


# KREUZ 231 KREUZ 232 Cargo Barge



PROFILE



MAIN DECK PLAN

Principal Particulars

Length, O.A. 230' (70.11m)  
 Breadth M.L.D. 64' (19.508m)  
 Depth M.L.D. 14' (4.270m)

**General Particulars**

Built 2008  
 Flag Singapore  
 Class BV  
 Notation I ✕ Hull, Pontoon  
 Unrestricted Navigation

**Deck Fittings**

Anchor 1 X 650KG Stockless anchor.  
 Anchor Winch 1 set of 10Ton capacity hand winch c/w one length of 30mm dia 240ft galvanized wire rope  
 Towing Brackets 2 Schmidt type Towing Pads at Bow of the Barge.

**Principal Dimensions**

Length Overall 230 ft (70.10m)  
 Width 64 ft (19.51 m)  
 Depth 14 ft (4.27 m)  
 Draft 3.37m  
 Side Board 2.4m  
 GRT / NRT 1850 / 493 Tons  
 Light Displacement 4243 Tons  
 Deadweight 3664.5 Tons  
 Deck Loading Capacity 10 Tons/m2

Above information presented are correct but not guaranteed

**Kreuz Offshore Marine Pte Ltd**

12 International Business Park , Cyberhub@IBP #03-02, Singapore 609920

Tel: +65 65050 600 | Fax: +65 65050 601 | Email: [marketing@kreuzinternational.com](mailto:marketing@kreuzinternational.com) | Website: [www.kreuzinternational.com](http://www.kreuzinternational.com)